



The Bombay Presidency Golf Club Limited.

CIN NO. : U92410MH1927NPL001307

Dr. Choithram Gidwani Road, Chembur, Mumbai – 400 074.
Tel.No: 022-50965000 (Board Line) Email : info1@bpgc-golf.com / bpgc1@mtnl.net.in
Website: www.bpgc-golf.com

EGM NOTICE

NOTICE IS HEREBY GIVEN THAT THE EXTRA-ORDINARY GENERAL MEETING NO 01/2022-23 OF THE BOMBAY PRESIDENCY GOLF CLUB LIMITED ("THE CLUB") WILL BE HELD THROUGH TWO-WAY VIDEO COFERENCING / OTHER AUDIO VISUAL MODE("OVAM") ON MONDAY, 4TH APRIL, 2022 AT 04.00 P.M. IST TO TRANSACT THE FOLLOWING BUSINESS:

SPECIAL BUSINESS:

ITEM NO. 1: TO CONSIDER AND APPROVE THE CAPITAL & REVENUE BUDGET FOR THE FINANCIAL YEAR 2022-2023

To consider and if thought fit, to pass the following resolution as an Ordinary Resolution:

"RESOLVED THAT, the Capital & Revenue Budget for the Financial Year 2022-23, prepared by the General Committee under Article 37A of the Articles of Association of the Club, and placed before the Members of the Club for approval, be and is hereby approved."

RESOLVED FURTHER THAT, the General Committee of the Club be and is hereby authorized to undertake all the necessary steps for giving effect to the budget and the above resolution in all respects."

For The Bombay Presidency Golf Club Limited

Kuldeep Singh Sandhu
President (Director)
DIN: 07621968

Place: Mumbai

Date: 11th March, 2022

Registered Office:

Dr. Choithram Gidwani Road,
Chembur Mumbai – 400074
Email: info1@bpgc-golf.com/bpgc1@mtnl.net.in
Website: www.bpgc-golf.com



The Bombay Presidency Golf Club Limited.

CIN NO. : U92410MH1927NPL001307

Dr. Choithram Gidwani Road, Chembur, Mumbai – 400 074.
Tel.No: 022-50965000 (Board Line) Email : info1@bpac-golf.com / bpac1@mtnl.net.in
Website: www.bpac-golf.com

EXPLANATORY STATEMENT PURSUANT TO SECTION 102 OF THE COMPANIES ACT. 2013

Item No. 1:

Article 37A of the Articles of Association of the Company provides as follows:-

BUDGET AND REPORTS

a. The Committee shall prepare itemized and detailed Budgets for the Revenue / Expense Balance Sheet, Cash Flow and Capital Expenditure for each Financial year commencing from April 1st to March 31st following the end of the present Financial year, to be duly approved by the General body at an Extraordinary General Meeting of the Ordinary Members to be convened and held not later than 15th March, every year. After the General Body approves the budgets for the year, the Committee shall not incur any expense beyond the approved budgets. In case of expense over-runs beyond 5% of the Expense or the Capital Expenditure budget, a revised budget will be presented to the General body for approval, at an Extra Ordinary General Meeting of the Ordinary Members.

b. The Treasurer will act as a Budgets Coordinator and will present the collated workings to the Committee at meetings held between December and February such that they are finalized and approved by the Committee at a meeting to be held not later than March 15th of every year."

The Budget for the financial year 2022-2023 was noted and recommended by the Audit Committee.

Accordingly, a detailed Budget for the Financial Year 2022-23 was placed before and approved by the General Committee members at its meeting held on 4th March, 2022.

In view of the above, the General Committee now requests that the Capital and Revenue Budget for financial year 2022-23 be approved by the Members of the Club as proposed in item no. 1 of the EGM notice by an Ordinary Resolution.

No member of the Committee or of the other Sub-Committee or any Key Managerial Personnel or any relatives thereof, has any concern or interest, financial or otherwise, in respect of any of the proposed item.

For The Bombay Presidency Golf Club Limited

Kuldeep Singh Sandhu
President (Director)
DIN: 07621968

Place: Mumbai
Date: 11th March, 2022



The Bombay Presidency Golf Club Limited.

CIN NO. : U92410MH1927NPL001307

Dr. Choithram Gidwani Road, Chembur, Mumbai – 400 074.
Tel.No: 022-50965000 (Board Line) Email : info1@bpgc-golf.com / bpgc1@mtnl.net.in
Website: www.bpgc-golf.com

NOTES:

1. In view of the continuing Covid-19 pandemic, the Ministry of Corporate Affairs ("MCA") has vide its circular dated May 5, 2020 read with circulars dated 8th April, 2020, 13th April, 2020, 5th May, 2020, 23rd June, 2021 and 8th December, 2021 (collectively referred to as "MCA Circulars") permitted the holding of the Extra-ordinary General Meeting ("EGM") through VC / OAVM, without the physical presence of the Members at a common venue. The registered office of the Club shall be deemed to be the common venue for the EGM. In compliance with the provisions of the Companies Act, 2013 ("Act"), and MCA Circulars, the EGM of the Club is being held through VC / OAVM. The procedure for participating in the meeting through VC/OAVM is explained at note no. 13 below and is also available on the website of the Company at www.bpgc-golf.com.
2. Pursuant to the provisions of Section 108 of the Companies Act, 2013 read with Rule 20 of the Companies (Management and Administration) Rules, 2014 (as amended), and the Circulars issued by the Ministry of Corporate Affairs dated April 08, 2020, April 13, 2020 and May 05, 2020 the Club is providing facility of remote e-voting and e-voting at the EGM to its Members in respect of the business to be transacted at the EGM. For this purpose, the Club has entered into an agreement with National Securities Depository Limited (NSDL) for facilitating voting through electronic means, as the authorized agency. The facility of casting votes by a member using remote e-voting system as well as on the date of the EGM will be provided by NSDL.
3. The Proposed Capital & Revenue Budget for the F.Y. 2022-23 was reviewed and approved by the Members of the General Committee ("GC") on 4th March, 2022. The General Committee hereby places the Capital & Revenue Budget for the F.Y. 2022-23 before the Ordinary Members of the Club for their approval.
4. Only "A" Members (Ordinary Members) are permitted to attend and vote at the Extra-ordinary General Meeting.
5. Members intending to ask questions regarding the Capital & Revenue Budget and matters related therewith should submit their queries in writing to the CEO, latest by **28th March, 2021** on email id info1@bpgc-golf.com/bpgc1@mtnl.net.in
6. Pursuant to the provisions of the Act, a Member entitled to attend and vote at the EGM is entitled to appoint a proxy to attend and vote on his/her behalf and the proxy need not be a Member of the Club. However, since this EGM is being held pursuant to the MCA Circulars the facility for appointment of proxies by the Members will not be available for the EGM and hence the Proxy Form and Road Map are not annexed to this Notice.
7. In accordance with, the General Circular No. 20/2020 dated May 5, 2020 issued by MCA, proposed Capital & Revenue Budget and other documents required to be



The Bombay Presidency Golf Club Limited.

CIN NO. : U92410MH1927NPL001307

Dr. Choithram Gidwani Road, Chembur, Mumbai – 400 074.
Tel.No: 022-50965000 (Board Line) Email : info1@bpgc-golf.com / bpgc1@mtnl.net.in
Website: www.bpgc-golf.com

attached therewith and the Notice of EGM are being sent in electronic mode to Members whose e-mail address is registered with the Club. No physical copies of the EGM notice and annexures thereof are being circulated to the members. Members may note that the EGM Notice, proposed Capital & Revenue Budget and other annexures, if any will also be available on the Club's website www.bpgc-golf.com and on the websites of NSDL – <https://www.evoting.nsdl.com>.

8. Ordinary Members attending the EGM through VC / OAVM shall be counted for the purpose of reckoning the quorum under Section 103 of the Act.
9. Whose email ids are not registered with the Club for procuring user id and password and registration of e mail ids for e-voting, please provide Membership ID/number., Name of Member, Mobile number by email to info1@bpgc-golf.com/bpgc1@mtnl.net.in.
10. Any person, who acquires membership of the Club after sending of the Notice as of the cut-off date, may obtain the login ID and password by sending a request at evoting@nsdl.co.in or info1@bpgc-golf.com/bpgc1@mtnl.net.in.

11. THE INSTRUCTIONS FOR MEMBERS FOR REMOTE E-VOTING ARE AS UNDER:-

- a. The remote e-voting period begins on **Thursday, 31st March, 2022 at 9.00 AM** and ends on **Sunday, 3rd April, 2022 at 5:00 P.M.** The remote e-voting module shall be disabled by NSDL for voting thereafter.
- b. Cut-off date is Saturday, 28th March, 2022 (For determining the eligibility to vote by remote e-voting or e-voting in Extraordinary General Meeting) in accordance with the applicable provisions of Companies Act, 2013.
- c. The General Committee has appointed Mr. Rabinder Nigam as the Scrutinizer to scrutinize the e- voting during the EGM and remote e-voting process.
- d. Please note that '**EVEN**' number of the Club for the purpose of e-voting is "**119541**".
- e. Members can use user Id and password earlier provided by the NSDL for the purpose of remote e-voting and e-voting at the EGM.
- f. **How do I vote electronically using NSDL e-Voting system?**

The way to vote electronically on NSDL e-Voting system consists of "Two Steps" which are mentioned below:

Step 1: Access to NSDL e-Voting system



The Bombay Presidency Golf Club Limited.

CIN NO. : U92410MH1927NPL001307

Dr. Choithram Gidwani Road, Chembur, Mumbai – 400 074.
Tel.No: 022-50965000 (Board Line) Email : info1@bpgc-golf.com / bpgc1@mtnl.net.in
Website: www.bpgc-golf.com

How to Log-in to NSDL e-Voting website?

1. Visit the e-Voting website of NSDL. Open web browser by typing the following URL: <https://www.evoting.nsdl.com/> either on a Personal Computer or on a mobile.
2. Once the home page of e-Voting system is launched, click on the icon "Login" which is available under 'Shareholder/Member' section.
3. A new screen will open. You will have to enter your User ID, your Password/OTP and a Verification Code as shown on the screen.
Alternatively, if you are registered for NSDL eservices i.e. IDEAS, you can log-in at <https://eservices.nsdl.com/> with your existing IDEAS login. Once you log-in to NSDL eservices after using your log-in credentials, click on e-Voting and you can proceed to Step 2 i.e. Cast your vote electronically.
4. Your User ID details are given below :

Your User ID is:

EVEN Number followed by Folio Number registered with the Club
For example if folio number is 001*** and EVEN is 101456 then user ID is 101456001***

5. Password details for Members are given below:
 - a) If you are already registered for e-Voting, then you can use your existing password to login and cast your vote.
 - b) If you are unable to retrieve or have not received the " Initial password" or have forgotten your password:
 - i) Click on "**Forgot User Details/Password?**"(If you are holding shares in your demat account with NSDL or CDSL) option available on www.evoting.nsdl.com.
 - ii) **Physical User Reset Password?** (If you are holding shares in physical mode) option available on www.evoting.nsdl.com.
 - iii) If you are still unable to get the password by aforesaid two options, you can send a request at evoting@nsdl.co.in mentioning your demat account number/folio number, your PAN, your name and your registered address etc.
 - iv) Members can also use the OTP (One Time Password) based login for casting the votes on the e-Voting system of NSDL.
- c) After entering your password, tick on Agree to "Terms and Conditions" by selecting on the check box.



The Bombay Presidency Golf Club Limited.

CIN NO. : U92410MH1927NPL001307

Dr. Choithram Gidwani Road, Chembur, Mumbai – 400 074.
Tel.No: 022-50965000 (Board Line) Email : info1@bpgc-golf.com / bpgc1@mtnl.net.in
Website: www.bpgc-golf.com

d) Now, you will have to click on “Login” button.

e) After you click on the “Login” button, Home page of e-Voting will open.

Step 2: Cast your vote electronically on NSDL e-Voting system.

How to cast your vote electronically on NSDL e-Voting system?

1. After successful login at Step 1, you will be able to see all the companies “EVEN” in which you are holding shares and whose voting cycle
2. Select “EVEN” of Club for which you wish to cast your vote during the remote e-Voting period Now you are ready for e-Voting as the Voting page opens.
3. Cast your vote by selecting appropriate options i.e. assent or dissent, verify/modify the number of shares for which you wish to cast your vote and click on “Submit” and also “Confirm” when prompted.
4. Upon confirmation, the message “Vote cast successfully” will be displayed.
5. You can also take the printout of the votes cast by you by clicking on the print option on the confirmation page.
6. Once you confirm your vote on the resolution, you will not be allowed to modify your vote.

General Guidelines for Members

1. It is strongly recommended not to share your password with any other person and take utmost care to keep your password confidential. Login to the e-voting website will be disabled upon five unsuccessful attempts to key in the correct password. In such an event, you will need to go through the “[Forgot User Details/Password?](#)” or “[Physical User Reset Password?](#)” option available on www.evoting.nsdl.com to reset the password.
2. In case of any queries, you may refer the Frequently Asked Questions (FAQs) for Members and e-voting user manual for Members available at the download section of www.evoting.nsdl.com or call on toll free no.: 1800 1020 990 and 1800 22 44 30 or send a request at evoting@nsdl.co.in

Process for those Members whose email ids are not registered with the Club for procuring user id and password and registration of e mail ids for e-voting for the resolutions set out in this notice:

1. Please provide Membership ID, Name of Member, from the Registered Email ID to info1@bpgc-golf.com/bpgc1@mtnl.net.in
2. Alternatively members may send a request to evoting@nsdl.co.in for procuring user id and password for e-voting by providing PAN (self attested scanned copy



The Bombay Presidency Golf Club Limited.

CIN NO. : U92410MH1927NPL001307

Dr. Choithram Gidwani Road, Chembur, Mumbai – 400 074.
Tel.No: 022-50965000 (Board Line) Email : info1@bpgc-golf.com / bpgc1@mtnl.net.in
Website: www.bpgc-golf.com

of PAN card), AADHAR (self attested scanned copy of Aadhar Card) in addition to the above details.

12. THE INSTRUCTIONS FOR MEMBERS FOR E-VOTING ON THE DAY OF THE EGM ARE AS UNDER:-

- i. The procedure for e-Voting on the day of the EGM is same as the instructions mentioned above for remote e-voting.
- ii. Only those Members, who will be present in the EGM through VC/OAVM facility and have not casted their vote on the Resolutions through remote e-Voting and are otherwise not barred from doing so, shall be eligible to vote through e-Voting system in the EGM.
- iii. Members who have voted through Remote e-Voting will be eligible to attend the EGM. However, they will not be eligible to vote at the EGM.
- iv. The details of the person who may be contacted for any grievances connected with the facility for e-Voting on the day of the EGM shall be the same person mentioned for Remote e-voting.

13. INSTRUCTIONS FOR MEMBERS FOR ATTENDING THE EGM THROUGH VC/OAVM ARE AS UNDER

- i. Member will be provided with a facility to attend the EGM through VC/OAVM through the NSDL e-Voting system. Members may access the same at <https://www.evoting.nsdl.com> under shareholders/members login by using the remote e-voting credentials. The link for VC/OAVM will be available in shareholder/members login where the EVEN of Company will be displayed. Please note that the members who do not have the User ID and Password for e-Voting or have forgotten the User ID and Password may retrieve the same by following the remote e-Voting instructions mentioned in the notice to avoid last minute rush. Further members can also use the OTP based login for logging into the e-Voting system of NSDL.
- ii. Members are encouraged to join the Meeting through Laptops for better experience.
- iii. Further Members will be required to allow Camera and use Internet with a good speed to avoid any disturbance during the meeting.



The Bombay Presidency Golf Club Limited.

CIN NO. : U92410MH1927NPL001307

Dr. Choithram Gidwani Road, Chembur, Mumbai – 400 074.
Tel.No: 022-50965000 (Board Line) Email : info1@bpgc-golf.com / bpgc1@mtnl.net.in
Website: www.bpgc-golf.com

- iv. Please note that Participants Connecting from Mobile Devices or Tablets or through Laptop connecting via Mobile Hotspot may experience Audio/Video loss due to Fluctuation in their respective network. It is therefore recommended to use Stable Wi-Fi or LAN Connection to mitigate any kind of aforesaid glitches.
- v. Members who would attend the EGM through VC/OAVM and who would like to express their views or ask questions during the EGM may register themselves as a speaker by sending their request from their registered email address mentioning their name, membership number, mobile number at info1@bpgc-golf.com/bpgc1@mtnl.net.in by **28th March, 2022 (5:00 p.m. IST)**. The members who have registered themselves as a speaker will only be allowed to express their views/ask questions during the EGM. The Club reserves the right to restrict the number of speakers depending on the availability of time for the EGM.

14. OTHER INSTRUCTIONS:

- i. The Scrutinizer shall, immediately after the conclusion of voting at the EGM, first count the votes cast during the EGM, thereafter unblock the votes cast through remote e-voting and make, not later than 48 hours of conclusion of the EGM, a Scrutinizer's Report of the total votes cast in favour or against, if any, to the Chairman or a person authorised by him in writing, who shall countersign the same.
- ii. The result declared along with the Scrutinizer's Report shall be placed on the Club's website www.bpgc-golf.com and on the website of NSDL <https://www.evoting.nsdl.com> immediately.

**By Order of the General Committee
The Bombay Presidency Golf Club Ltd**

Place : Mumbai

Date : 11th March, 2022

**Kuldeep Singh Sandhu
President (Director)
DIN: 07621968**



The Bombay Presidency Golf Club Ltd.

CIN No.: U92410MH1927NPL001307

Dr. Choithram Gidwani Road, Chembur, Mumbai – 400 074
Tel.No. : 022 – 5096 5000 (Board Line) Email : bpgc1@mtnl.net.in
Website : www.bpgc-golf.com

25th February, 2022

Dear Friends

Greetings and Good Wishes from BPGC

We all trust and hope that all of you are in good health and taking adequate precautions for Covid 19, where we are still not yet out of the woods.

The purpose of this communications is to brief you on the forthcoming Budget Approval Process of the Club. As you are all aware that our GC has always been in a constant endeavor to maintain and upgrade the golf playing course and club facilities to a world class standard and give similar experience to its club members.

Towards this end, there has always been actions taken to maintain and upgrade the course facilities, for which we seek out the members approval through the annual budget approval process before proceeding with the same.

In a similar manner, we are approaching you all for the approval of the forthcoming budget for Financial Year 2022-23 and present herewith the highlights for the forthcoming years Budgeted Expenditure for your perusal and approval. We also assure you that each of the Capital Items proposed has been taken up for implementation based on need-based policy for maintaining and upgrading the quality of the golf course to achieve world class standards and experience to the club members

We are proposing the following **Capital Expenditure Items** during the forthcoming financial year 2022-2023:

1. Course Maintenance Machines : Rs. 220.00 lakhs

Proper Care and Maintenance of the Golf Course in a prime condition is a basic necessity for us to help members experience the best of golf. For this purpose, we are proposing to acquire **10 (Ten New Machines)** totally costing about 220 lakhs as per the full details given in the annexure to the budget working papers.

- 7 (Seven) of them are for replacement of existing machines which will be scrapped
- 3 (Three) are going to be new machines being acquired for the first time.
- The old machines are beyond operational life (more than 10 yrs old) and their spares are not available in the market, making any repairs beyond economical value
- The motorised bunker rake is required to efficiently rake bunkers on a day to day basis. Currently we are deploying 9 labours per day for bunker maintenance. With this machine we will be able to reduce this number to 3 labours per day. This is a reduction of more than 60% in man power cost.
- The wood chipping machine will provide an environment friendly and economical way to dispose arboriculture waste and will help us in managing weed removal in landscape areas.
- Sand sieve will keep the top dressing sand, free of debris or bigger particles, which will improve mower life and help in improving the root profile of grass.



The Bombay Presidency Golf Club Ltd.

CIN No.: U92410MH1927NPL001307

Dr. Choithram Gidwani Road, Chembur, Mumbai – 400 074
Tel.No. : 022 – 5096 5000 (Board Line) Email : bpgc1@mtnl.net.in
Website : www.bpgc-golf.com

- **Rationale for Expenditure :**

- a. There is a need to automate the maintenance process
- b. To ensure increased machine uptimes
- c. To ensure better maintenance and upkeep of the Golf Course
- d. In view of the onsolete and poor conditions of the existing machines, acquiring the new machines is a Necessity and not an Option

2. Ten New Golf Carts : Rs. 42.00 lakhs

- At start of FY 2021-22 we had 40 Golf carts out of which 4 Carts have been scrapped off.
- In the next year about 6 Golf carts will be ready to be scrapped.
- In order to meet the demand of our Golfers we need to have adequate carts so that Golfers have access to the carts and there is no strain on the existing fleet.
- In addition our existing fleet is ageing and needs to be replaced within next 3-4 years thus it is recommended to procure 10 Golf carts each year for next 4 years.

- **Rationale for Expenditure:**

- a. To cater to increasing demand from members
- b. To ensure greater availability due to increased uptimes
- c. To ensure greater comfort to playing members
- d. For better fuel efficiency

3. New Workshop and Machine Shed : Rs. 161.00 lakhs

- We currently have a fleet of Turf care equipment which is worth 5.00 to 5.50 Crores.
- Further to this we are planning to add more equipment worth Rs. 2.2 Crores in this financial year.
- Due to lack of parking space and proper workshop area we are forced to park many of our existing equipment out in the open at the mercy of the elements. Causing corrosion and depleting the functional life of this equipment.
- We need to have a new and proper workshop shed with parking area to accommodate the growing fleet. A proper workshop area will help our workshop in keeping all the equipment in operation and a parking area will increase the life of the equipment.
- The New Workshop and Machine Shed, admeasuring an area of 1550 sq mtrs will have an MS Steel Structure, GI Coated Roofing, adequate ventilation fans, cabin spaces, Car Wash Area, Washroom, Storage room, Fuel storage room, steel fabricated storage racks and finally a Workshop bay with overhead cranes for easy maintenance and repairs of machines

- **Rationale for Expenditure:**

- a. To properly house the Turf Care Machines & Equipment and also for storage of other items
- b. To ensure easy and regular maintenance and periodic servicing of these machines in a proper manner.
- c. To avoid exposure of these Turf Care machines to hostile environment



The Bombay Presidency Golf Club Ltd.

CIN No.: U92410MH1927NPL001307

Dr. Choithram Gidwani Road, Chembur, Mumbai – 400 074
Tel.No. : 022 – 5096 5000 (Board Line) Email : bpgc1@mtnl.net.in
Website : www.bpgc-golf.com

4. Phase I-B Development Cost (Balance Area of Phase I) : Rs. 164.00 lakhs

- The renovation of BPGC was started from hole no. 11 to Hole no. 15, this area was termed as Phase 1. In this phase 1, due to budgetary constraints the area to be actually worked on was limited to tree line to tree line, which left areas beyond roughs without any work. This is made clear in the mail by David Brinkel (Annexure Attached to this Letter).
- The proposed expense is targeting the area which was not developed during the construction of phase 1.
- These areas need to be developed as per the current standards because these areas don't have proper drainage which creates water stagnation during monsoon.
- Secondly these areas are the original soil beds which were not completely planted with Paspalum. Due to this the weeds density is higher in these extremities and the Paspalum has to compete with fast growing weeds.
- Developing these areas will provide the Paspalum time to cover the area and create a fully covered turf area which will demotivate emergence of any weeds.

- The course upgradation for the current financial year has been proposed at the expense of 164 lakhs on the capital side. However a provision of 199 lakhs has been made on the revenue side for sand related to this course upgradation. This is in addition to sand expenses of 46.00 lakhs as part of routines and expenses. The reason why the additional expenses of sand is not taken on the capital side is because the sand expenses were always taken as revenue in the past phase 1 course upgradation which was undertaken in the financial year 17-18. Then a provision of 388 lakhs was made for the course upgradation of which 232 lakhs was part of the sand expenses. However even at that point they said expenses were taken on the revenue side.
- Therefore, to get a comprehensive idea the following has to be borne in mind. The actual expenditure for the purposes of course upgradation in 17-18 was 388 lakhs and in the current year is 363 lakhs. These figures encompass the total expenses comprising of provisions both on the capital and revenue sides.

- **Rationale for Expenditure :**
 - a. To complete the pending Phase I development as per the David Brinkel's Masterplan
 - b. This development will help in bringing the whole area at same standard as the rest of the golf course; this will enhance the aesthetics and will improve the experience of members.
 - c. To ensure better playing conditions and experience for the members

5. Upgradation of Irrigation Systems (Phase I – Hole 11 to 15) : Rs. 50.00 lakhs

- The RainBird Irrigation system installed at our Course is more than 12 years old.
- We have a satellite box based irrigation system which is an obsolete technology in today's age.
- The software which runs our system is outdated and needs to be updated.
- Our satellite boxes have started to fail and slowly we will have to replace all of the boxes but replacing boxes is not a permanent solution as these satellites can be deemed completely obsolete by RainBird in next 4-5 years.



The Bombay Presidency Golf Club Ltd.

CIN No.: U92410MH1927NPL001307

Dr. Choithram Gidwani Road, Chembur, Mumbai – 400 074
Tel.No. : 022 – 5096 5000 (Board Line) Email : bpgc1@mtnl.net.in
Website : www.bpgc-golf.com

- We are targeting to upgrade our irrigation system by replacing the ageing satellite boxes with the latest IC system where each sprinkler can be connected directly to the central control giving us higher degree of control over the irrigation and help us to provide water only where necessary.
- This upgradation requires some excavation for laying of cable and some pipes but the effect to play will be minimal.
- If we go ahead with development of 1B of Phase 1 then this upgradation can be done alongside so that there is minimal disturbance to play and we can upgrade about 5 holes in one go.
- **Rationale for Expenditure :**
 - a. To upgrade the existing irrigations systems which is based on obsolete technology
 - b. To upgrade the systems for better maintenance and sustainability of the course.
 - c. To prevent disruptions to the course area later on, if it is to be taken up later.
 - d. To ensure better playing conditions and experience for the members

For Incurring the above Capital Budgeted Expenditure, it is proposed to Enroll new members for raising the required resources and the tentative pipeline of new members is already in the wait list. Hence we do not foresee any trouble in raising the required resources for this Capital Budget Expenditure.

Further, we are also proposing the following **Revenue Budget** for the forthcoming financial year 2022-2023:

Rs. In Lakhs

Budgeted Income for the Financial Year 2022-23	1,601
Budgeted Expenditure for the Financial Year 2022-23	2,106
Net Budgeted Surplus / (Deficit) for the Year	(505)

Full Details are given in the Budget Working Annexure.

Some of the Key Reasons for the Budgeted Deficit Working for the Year includes :

- Management making very conservative estimations / projections in the working estimates.
- Revenue projections have been made on current situation and government regulations.
- Expenditure projections have been made considering a gradual opening up of the Business Environment post covid lockdown relaxations.
- In case the recovery is faster than estimates, we will foresee a positive upside and surprise in our working results.
- This year the Capital Gains Income will be down since most of the FMP maturities are already over and only one remaining FMP will mature in April 22



The Bombay Presidency Golf Club Ltd.

CIN No.: U92410MH1927NPL001307

Dr. Choithram Gidwani Road, Chembur, Mumbai – 400 074
Tel.No. : 022 – 5096 5000 (Board Line) Email : bpgc1@mtnl.net.in
Website : www.bpgc-golf.com

We Trust that we have been able to share the major clarifications, reasons and rationale for these budgeted expenditure. In case anyone feels or needs any further details, you are welcome to write to us. With these details we commend this Budget Exercise to the Members for their perusal and approval. We are quite sure that you will all rise to the occasion and approve this Budget to help and enable us to maintain and upgrade the quality of our golf course to world class standards and experience to the club members.

Thanking you

For The Bombay Presidency Golf Club Ltd

R. K. PADMANABHAN
Hon Treasurer

THE BOMBAY PRESIDENCY GOLF CLUB LIMITED

BUDGET WORKING FY 2022-23

CAPITAL BUDGET

THE BOMBAY PRESIDENCY GOLF CLUB LTD					
CAPITAL BUDGET FY 2022-23					
All figs in Lakhs					
Sr No.	Depart ment	Description	Annexure	Amount	Total Amount
1	Golf	Machines for Course Maintenance (Turf Care Machines)	1	220	
2		Replacement of Golf Carts (Ten Nos)	2	42	
3		Workshop & Machine Shed	3	161	
4		Phase I-B Development Cost (Balance Area of Phase I)	4	164	
5		Upgradation of Irrigation System (Phase I - Hole 11 to 15)	5	50	637
Total					637

Anx 1 : COURSE MAINTENANCE MACHINES - 1

FOR FAIRWAY MOVING (Machine to be acquired)

Self Propelled ride on Fairway Mover 24-28 HP 3 Wheel Drive

Cost : approx. 63.82 lakhs



To Replace this Existing Machine :

FAIRWAY MOWER 305 : 11 YRS OLD. Beyond Operational Life. Spare Part availability is an issue



Anx - 1 : COURSE MAINTENANCE MACHINES - 2

FOR ROUGH MOVING – LARGE AREA

WESSEX CRX 150 TRACTOR Towed Rough Mower

Cost : approx. 7.50 lakhs



To Replace this Existing Machine :

AR3 : 12 YRS OLD. Beyond Operational Life & Economical Repairs. Obsolete Model, Spare Part availability is an issue. Service Not available



Anx - 1 : COURSE MAINTENANCE MACHINES - 3

FOR ROUGH MOVING – SMALL AREA

TORO TITAN 152CM Ride on Mower

Cost : approx. 10.65 lakhs



To Replace this Existing Machine :

AR3 : 11 YRS OLD. Beyond Operational Life & Economical Repairs. Obsolete Model, Spare Part availability is an issue. Service Not available



Anx - 1 : COURSE MAINTENANCE MACHINES - 4

FOR GREEN / TEE MOWING

RIDE ON GREEN MOWER with De Thatching Reels

Cost : approx. 45.16 lakhs



To Replace this Existing Machine :

Jacobsen Greens King IV Plus : 11 YRS OLD. Beyond Operational Life. Availability of Spares and Service is an issue



Anx - 1 : COURSE MAINTENANCE MACHINES - 5

UTILITY VEHICLE MID PERFORMANCE

TORO WORKMAN MDX

Cost : approx. 12.63 lakhs



To Replace this Existing Machine :

Clubcar Carry All : 10 YRS OLD. Beyond Operational Life. Availability of Spares and Service is an issue



Anx – 1 : COURSE MAINTENANCE MACHINES - 6

UTILITY VEHICLE HIGH PERFORMANCE

HEAVY DUTY UTILITY VEHICLE

Cost : approx. 31.87 lakhs



To Replace this Existing Machine :

TORO WORKMAN HDX : 12 YRS OLD. Beyond Operational Life and Beyond Economic Repair



Anx - 1 : COURSE MAINTENANCE MACHINES - 7

TRACTOR 55 HP MULTI PURPOSE

JOHN DEERE / MAHINDRA / KUBOTA

Cost : approx. 9.50 lakhs



To Replace this Existing Machine :

Mh03AF8307 – TR 575 NBP Bhumi Putra: 11 YRS OLD.
Beyond Operational Life and Beyond Economic Repair



Anx – 1 : COURSE MAINTENANCE MACHINES - 8

BUNKER RAKING / MISCELLANEOUS WORKS

Motorised Bunker Rake including tooth rake, sprink rake and Drag Mat Carrier System

Cost : approx. 19.10 lakhs



NEW MACHINE

Club should have one motorized rake as it will reduce man-days required for bunker maintenance and have a quicker turnaround time. Further it's a multifunctional machine so will help in towing drag mat, levelling of small projects and towing of de watering pumps, blowers, etc

Anx - 1 : COURSE MAINTENANCE MACHINES - 9

WOOD CHIPPER MACHINE

INDIAN MADE HEAVY DUTY & MOBILE UNIT

Cost : approx. 15.00 lakhs



NEW MACHINE

Using Wood chips as mulch will improve the aesthetics of the course and will help in economical disposal of arboriculture waste

Anx - 1 : COURSE MAINTENANCE MACHINES - 10

**SAND SIEVING MACHINE FOR REMOVAL OF
DEBRIS FROM COURSE MAINTENANCE SAND
LOCALLY FABRICATED & CUSTOMISED TO OUR REQUIREMENT**

Cost : approx. 5.00 lakhs

NEW MACHINE

**A Machine is required to sieve sand
in order to have no stones or
pebbles in the sand for top dressing
of greens or fairways to avoid
damage to mower and clubs of
golfers**

Anx - 2 : REPLACEMENT OF GOLF CARTS

PURCHASE OF 10 NEW GOLF CARTS

10 New Golf Carts @ approx. 4.15 lakhs per cart

Cost : approx. 42.00 lakhs



NEW GOLF CARTS

At the start of FY 21-22 we had 40 Golf Carts out of which 4 have been scrapped off

In the next year about 6 Golf Carts will be ready to be scrapped

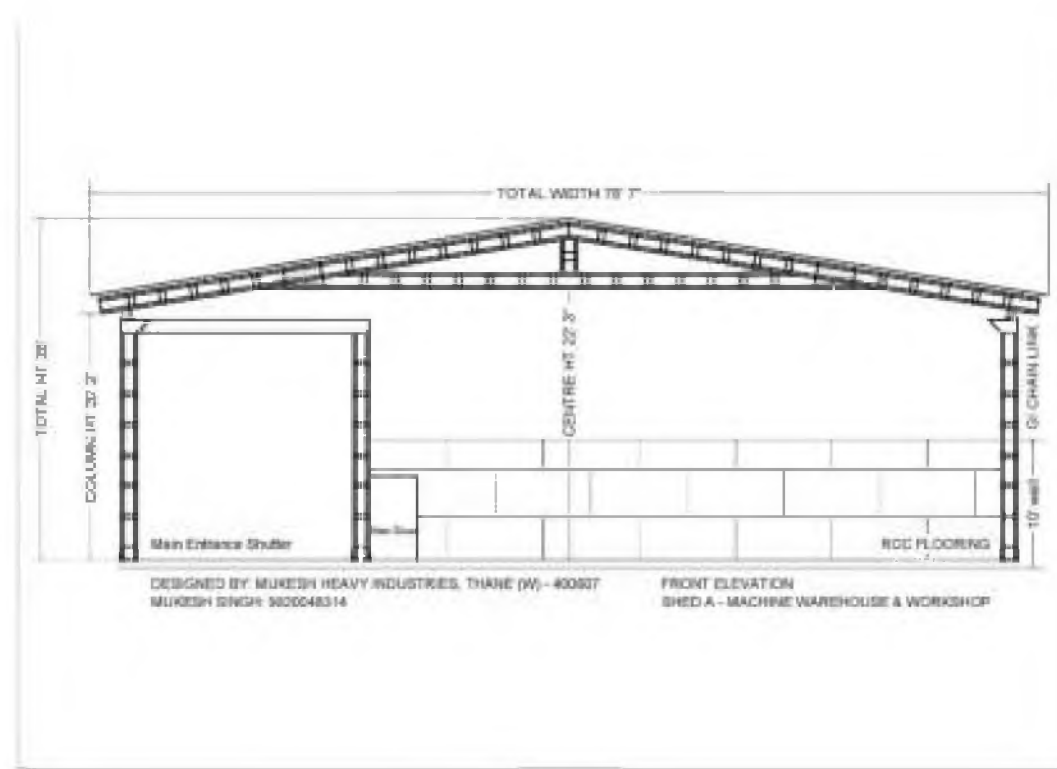
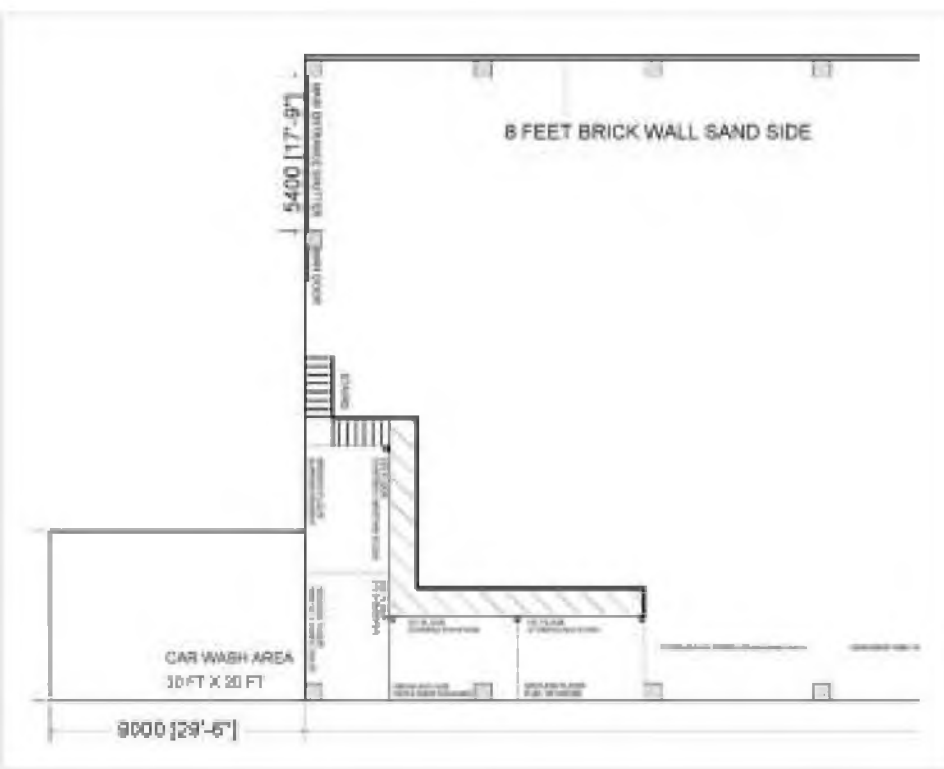
In order to meet the demand of our Golfers we need to have adequate carts so that Golfers have access to the carts and there is no strain on the existing fleet.

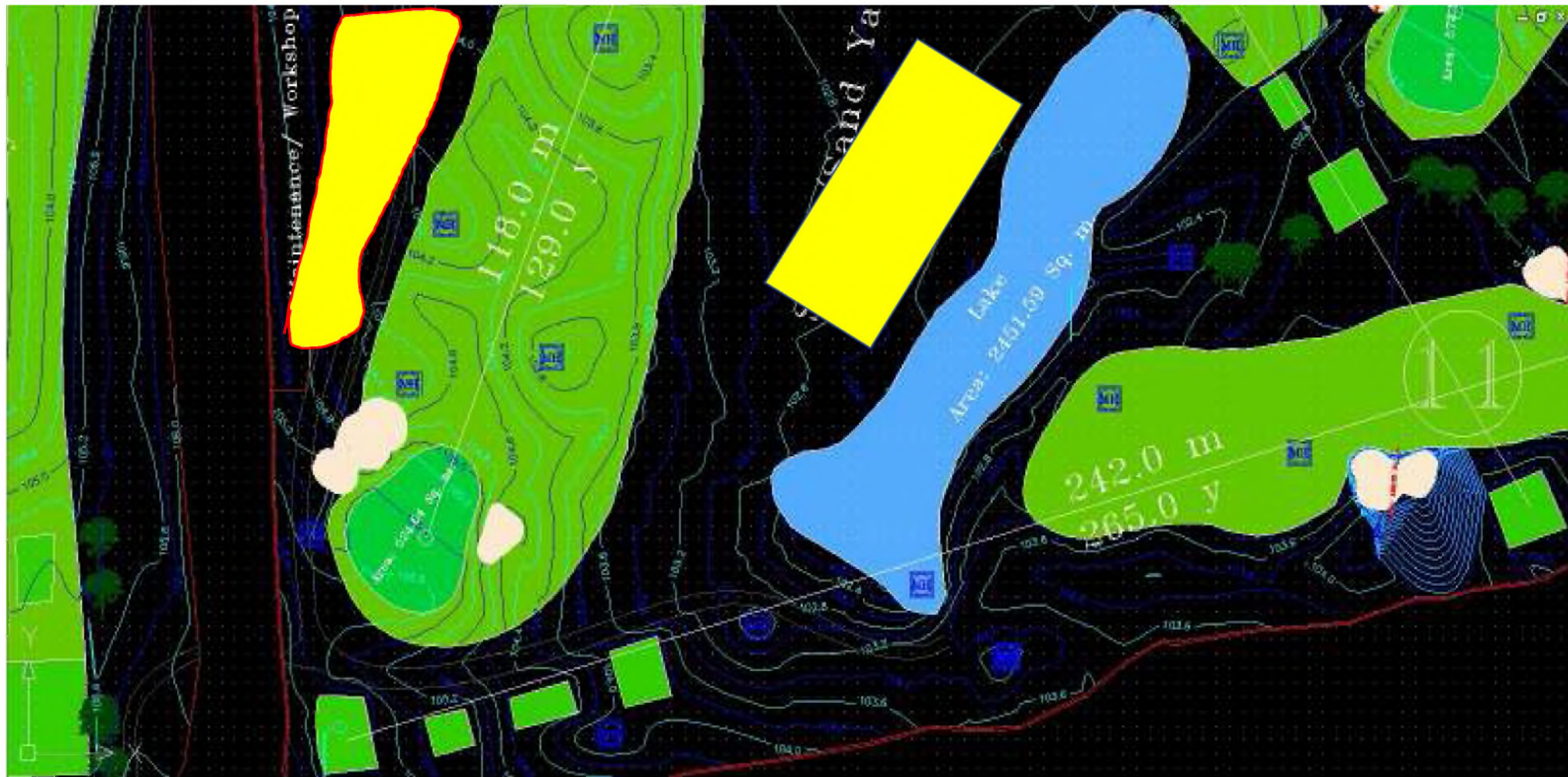
In addition, our existing fleet is ageing and needs to be replaced within the next 3-4 years.

Thus it is recommended to procure 10 new Golf Carts each year for the next 4 years

Anx - 3 : WORKSHOP & MACHINE SHED

NEW WORKSHOP AND MACHINE SHED		NEW WORKSHOP & MACHINE SHED
admeasuring an area of 1550 sq mtrs, will have an MS Steel Structure, GI Coated Roofing, adequate ventilation fans etc. (as per last year)	1,25,00,000	We currently have a fleet of Turf Care equipment worth 5.00-5.50 crs
Car Wash Area	3,50,000	Further we are planning to add more equipment worth 2.2 crs
Additional Cabins, Washroom, Storage Area, Fuel Storage Room, Steel Fabricated Storage Racks, Stairs	20,00,000	Due to lack of parking space and proper workshop area we are forced to park many of our existing equipment out in the open at the mercy of the elements causing corrosion and depleting functional life of the equipments
Workshop Bay with Overhead Crane for Easy Maintenance & Repair of Machines	10,00,000	
Other Miscellaneous Items & Contingencies	2,50,000	
TOTAL BUDGETED COSTING	1,61,00,000	Need a proper workshed with parking area to accommodate the growing fleet.





WORKSHOP & MACHINE SHED – Extending the Existing Shed – Why Not Possible

- a. Extending the shed only provides cover over the existing service road and does not provide a practical work space for the following:
 - i. No ease of access to all parts of equipment with a crane in existing or extended Workshop floor.
 - ii. Existing workshop area does not have sufficient area for grinder station for safe and efficient operation of reel and bedknife grinders.
 - iii. No proper pressurised air network for pneumatic tools operation.
 - iv. No cleaning washing area for equipment.
 - v. No proper parking of equipment.
- b. Extending existing shed will create an obstruction @ RHS of the 15th Fairway which will be carried on till a few yards of the Green causing hindrance in play and a change in the character of the hole. This was already evaluated in 2018 and rejected.
- c. Having a workshop so close to the hole creates disturbance to the golfers, i.e vehicle movement, staff movement, workshop noises etc.
- d. The service road being covered is the only heavy vehicle accessible road for the area between 14th and 15th. This area is our sand storage and arboriculture waste storage before disposal, so all year round access to this area is required and the road cannot be closed so just covering the road provides no meaningful space to the complex.

WORKSHOP & MACHINE SHED – WHY AREA BETWEEN 14TH & 15TH CHOSEN

- a. The area is open in the middle with tree cover from four sides. Making it hidden from almost all playing areas.
- b. The area does not come in direct line of play from any of the three neighbouring holes i.e Hole # 11, # 14 and # 15. Thus construction here will have no change to the character of the course.
- c. This area has access to heavy vehicles and has ample area for storage of sand and arboriculture waste even after construction of the proposed shed.
- d. The proposed workshop will be in the middle of the course yet will be no disturbance to the golfers.
- e. Workshop is always recommended to be near the sand storage area for ease of operations and in coming times we will be improving the sand storage by making it vertical so that more area is available for future requirements.
- f. The proposed area will provide space for making a professional workshop which will be equipped with latest maintenance equipment and will also provide space for staff area and offices etc.

THE BOMBAY PRESIDENCY GOLF CLUB LIMITED

Annexure – 4 : Phase 1B : Development Cost of Balance Area of Phase 1

COST WORKOUT FOR PHASE 4 CONSTRUCTION

HOLE No.	Area	UNIT
11	7466.646	SQM
12	4776.72	SQM
13	4150.71	SQM
14	7687.133	SQM
15	9387.97	SQM
9	3321.52	SQM
17	3384.18	SQM
Nursery @ 12	927.71	SQM
Nursery @ 15	877.01	SQM
TOTAL	41979.599	SQM

MATERIAL REQUIRED

PARTICULARS	QTY	UNIT
Coir mat required	41979.60	SQM
Metal / Gravel 1 & 2 No. (15 - 20 mm)	4265.13	CUM
Metal in Brass	1505.59	Brass

APPROX COST OF MATERIAL

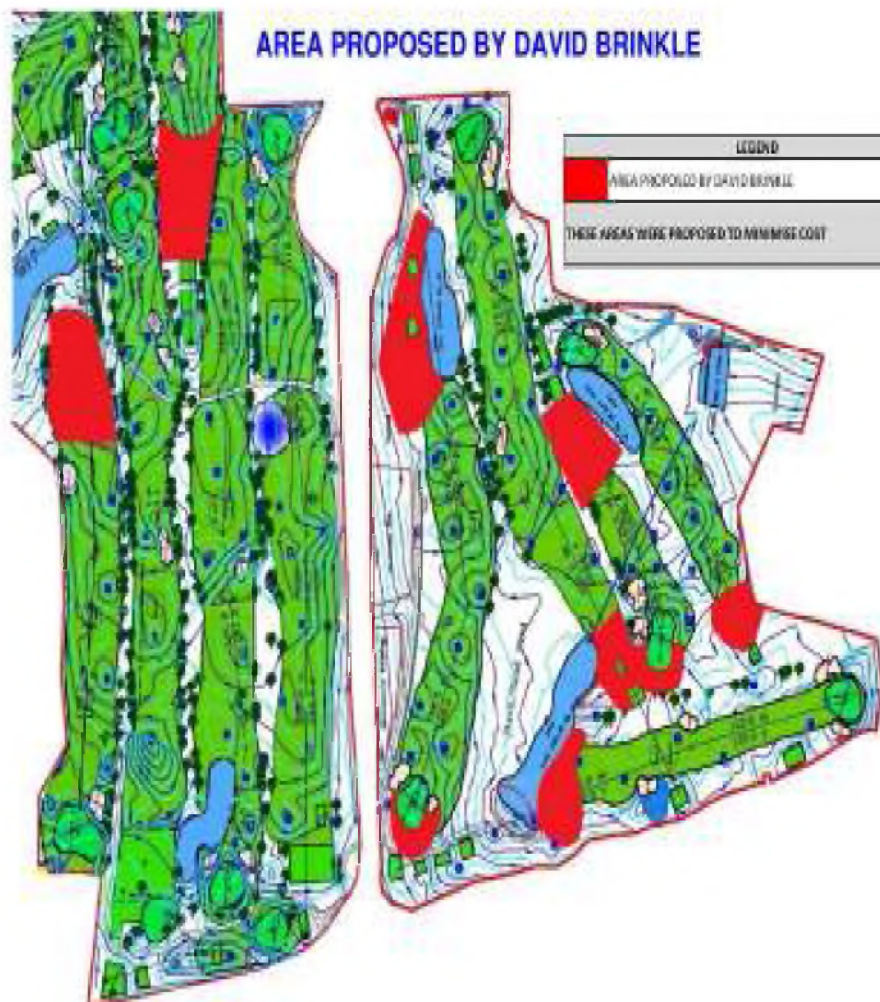
PARTICULARS	RATE PER UNIT	AMOUNT
COIR mat @ Rs 98 per SQM	₹ 98	₹ 41,14,000.7
METAL/ GRAVEL @ 3500 per brass	₹ 3,500	₹ 52,69,564.7
SUBTOTAL 1		₹ 93,83,565.4

COST OF CONSTRUCTION

CONTINENTAL @ 167.29 per SQM	₹ 167.29	₹ 70,22,767.1
TOTAL COST OF CONSTRUCTION		₹ 1,64,06,332.5

The above cost is for development of Balance area of Phase 1 (1B of Phase 1)

AREA PROPOSED BY DAVID BRINKLE



PROPOSED AREA TO BE DEVELOPED IN PHASE 1-B



THE BOMBAY PRESIDENCY GOLF CLUB LIMITED

ANNEXURE 5

Proposal for Upgradation of Hole 11, 12, 13, 14, and 15 with IC based Irrigation System

Sr. No.	Product Description	Qty	Unit	Rate	Amount	Remarks
1	Irrigation Software up gradation package from Stratus LT to Stratus II Ver 8 - Rain Bird (USA)	1	Nos	8,87,750	8,87,750	One Time only. Applicable for 18 Holes and all future Expensions
2	ICI+ Interface Unit - Rain Bird (USA)	1	Nos	8,39,089	8,39,089	One Time only. Applicable for 18 Holes and all future Expensions
3	IC Module with Adopter - Rain Bird, USA	80	Nos	15,990	12,79,200	for Hole 11,12,13, 14 and 15
4	#14/2 Maxi Communication Wire - (1Roll = 2500') - Rain Bird (USA)	3	Rolls	1,35,000	4,05,000	
5	ICSD Surge Device - Rain Bird (USA)	12	No.	6,550	78,600	
6	5/8" Copper Road with Clamp	12	No.	3,500	42,000	
7	Wire Connector Splices Rain Bird (USA)	160	No.	150	24,000	
8	Trenching & Back Filling of soft soil	2000	Mtr.	75	1,50,000	
9	Installation, Testing and Commissioning	1	Unit	L/S	2,00,000	
	Total Amount (A)				39,05,639	
	GST @ 18%				7,03,015	
	Grand Total Amount				46,08,654	

THE BOMBAY PRESIDENCY GOLF CLUB LIMITED

BUDGET WORKING FY 2022-23

REVENUE BUDGET

REVENUE BUDGETS FY 2022-23 : KEY POINTS TO NOTE

- **Budgeted Deficit of Rs. 505.00 Lakhs for the Year**
- Management has made very conservative / ultra conservative estimations / projections in the working estimates
- Revenue Projections have been made on the current situation and government regulations
- Expenditure projections have been made considering a gradual opening up of the Business Environment post covid lockdown relations
- In case the recovery is faster than estimates, we foresee a positive upside and surprise in the working results
- This year Capital Gains income will be down (950 to 208 lakhs) since most of the FMP maturities are already over and only one remaining FMP will mature in April 2022

THE BOMBAY PRESIDENCY GOLF CLUB LIMITED

REVENUE BUDGET SUMMARY FY 2022-23

Amt : Rs. In Lakhs

INCOME	Actuals Audited	Actuals Audited	Actuals Audited	Revenue Budget	Actuals UnAudited	Revenue Budget
	YE Mar 19	YE Mar 20	YE Mar 21	YE Mar 22	PE Dec 21	YE Mar 23
Subscription, Green Fees, Entrance fees Short term & Corporate	811	1,009	890	912	729	911
Tournament, Junior Coaching, Sponsorship, Hoarding	161	116	9	13	31	24
Events - Annual Day, New Year & Christmas, Sponsorship	37	33	5	5	0	10
Permit Room Sale, Rental receipts from Rooms, Banquet,	460	398	120	150	107	221
Income from Catering	38	47	8	20	5	36
Income from Mutual Funds Gain	338	266	500	947	991	208
Interest Income	46	93	179	136	137	160
Other Income -(Rent from Proshop, Driving Range, Interest on Outstanding, Branding, Stall Activities & Scrap Sale)	68	58	42	64	22	31
Total Income	1,959	2,020	1,754	2,248	2,022	1,601
EXPENDITURE						
Course Maintenance Expenses	947	692	165	321	154	521
Cost of Amenities- Permit Room, Rooms, Laundry Expenses	275	267	94	133	108	167
Tournament, Junior Coaching, Interclub Expenses	117	148	27	30	20	53
Annual Day, New Year & Christmas, Caddies Welfare	77	77	57	89	31	89
Electricity & Gas Charges	167	158	71	132	72	152
Employees Remuneration & Benefits including Consultant	593	577	585	613	335	540
Admin Expenses- Security, Legal & Professionals Fees, etc	251	286	268	287	219	333
Repairs & Maintenance Expenses	139	160	114	120	73	120
Other Expenses- Lease Rent, Property Tax, etc	73	83	77	128	71	131
Total Expenses	2,638	2,449	1,458	1,853	1,083	2,106
Surplus / (Deficit) before Depreciation & Prior Period Items	(679)	(428)	296	395	939	(505)
Prior Period Expenses	21	1	-		0	
Depreciation	161	155	164		107	
Net Surplus / (Deficit) for the year	(861)	(584)	132		831	

THE BOMBAY PRESIDENCY GOLF CLUB LTD
DETAILS OF BUDGETED REVENUE INCOME FY 2022-23

Amount Rupees in Lakh

Particulars	Committee	Actuals Audited	Actuals Audited	Actuals Audited	Revenue Budget	Actuals UnAudited	Revenue Budget
		YE Mar 19	YE Mar 20	YE Mar 21	YE Mar 22	PE Dec 21	YE Mar 23
RECEIPTS FROM MEMBERS							
Subscription	Greens	325	504	493	476	474	489
Green Fees (From Guest)	Greens	132	106	61	96	56	90
Entrance Fees	Greens	334	374	328	330	191	312
Guest Charges	Greens	20	20	3	6	4	18
Administrative Charges From Members	Greens	1	1	0	1	1	1
Re-Instatement fees	Greens	0	4	5	3	4	-
Sub Total		811	1,009	890	912	729	911
TOURNAMENT, COMPETITION & COACHING RECEIPTS							
Tournament Income	Tournament	128	86	-	-	19	-
Senior Golf Tournament	Senior Golf	1	3	0	1	-	1
Men's Tournament Income	Tournament	6	1	3	4	1	3
Ladies Tournament Income	Tournament	6	8	0	-	5	5
Juniors Coaching Income	Junior Golf	21	18	6	8	7	16
Sub Total		161	116	9	13	31	24
ACTIVITIES AND EVENTS INCOME		-					
Annual Day Income	Events	8	10	-	-	-	5
Christmas Party	Events	0	0	-	-	-	-
New Year Income	Events	15	13	-	-	-	5
Other Events	Events	2	0	-	-	-	-
Golf Practice Income	Greens	12	10	5	5	0	-
Sub Total		37	33	5	5	0	10

AMENITIES INCOME		-
Permit Room Sales	Bar	264
Rental Receipts - Hire Charges from Members	Hosp&Hygiene	130
Locker & Rack Rent	Greens	13
Health Club & Gymnasium Receipts	Health & Wellness	5
Other Sales / Income	Admin	0
Hoarding & Display Income (Adoption of Hole)	Greens	46
Swimming Pool Receipts	Health & Wellness	2
Sub Total		460
OTHER INCOMES		-
Interest Income	Admin	46
(A)		46
Gain on Mutual fund	Admin	338
(B)		338
Establishment Income - Catering	Catering	38
(C)		38
Establishment Income - Proshop	Greens	8
Establishment Income - Evosports	Greens	7
Other Income -(Interest on Outstanding,etc,)	Greens	51
Sale of Scrap	Greens	2
(D)		68
Sub Total (A +B+C+D)		489
Total of Income		1,959

257	71	100	71	150
104	26	32	22	50
12	11	8	7	10
6	-	-	-	-
4	2	-	1	1
14	11	10	6	10
1	-	-	-	-
398	120	150	107	221
93	179	136	137	160
93	179	136	137	160
266	500	947	991	208
266	500	947	991	208
47	8	20	5	36
47	8	20	5	36
9	6	7	3	8
6	2	6	4	7
43	34	50	14	15
1	0	1	1	1
58	42	64	22	31
464	729	1,167	1,154	435
2,020	1,754	2,248	2,022	1,601

THE BOMBAY PRESIDENCY GOLF CLUB LTD

DETAILS OF REVENUE EXPENDITURE FY 22-23

Amount Rupees in Lakh

Particulars	Committee	Actuals Audited	Actuals Audited	Actuals Audited	Revenue Budget	Actuals UnAudited	Revenue Budget
		YE Mar 19	YE Mar 20	YE Mar 21	YE Mar 22	PE Dec 21	YE Mar 23
COURSE MAINTENANCE EXPENSES							
CM - Fertilizers	Greens	30	12	18	24	28	24
CM - Fuel Expenses	Greens	22	20	21	36	19	44
CM - Labour Expenses	Greens	29	33	31	32	30	34
CM - Other Expenses	Greens	118	53	4	10	5	10
CM - Pesticides	Greens	10	3	12	29	2	29
CM - Repairs & Maintenance Expenses	Greens	110	108	61	123	73	114
CM - Sand Expenses	Greens	310	356	55	46	39	46
CM- Changes in Inventories	Greens	160	22	(39)		(47)	
Course Upgradation	Greens	142	85	-	-	5	199
Landscaping including maintenance	Greens	16	-	-	20	-	21
Sub Total		947	692	165	321	154	521
							-
AMENITIES							
Permit Room Expenses	Bar	185	184	50	60	57	90
Billiard Room Expenses	Hosp&Hygiene	-	-	-	3	2	1
Cable TV Charges	Hosp&Hygiene	3	3	1	2	4	3
House Keeping Charges	Hosp&Hygiene	67	63	39	57	43	67
Room Expenses	Hosp&Hygiene	8	5	4	5	1	3
Other Facilities	Hosp&Hygiene	-	-	0	0	0	-
Laundry Expenses	Hosp&Hygiene	8	8	1	4	2	5
Catering Expenses	Catering	3	4	-	2		-
Sub Total		275	267	94	133	108	167
TOURNAMENTS							
Tournament Expenses	Tournament	65	96	5	5	6	5
Inter Club Tournament Expenses	Tournament	5	8	7	7	-	7
Jrs Coaching Expenses	Junior Golf	38	39	11	12	14	34
Senior Golf Tournament Expenses	Senior Golf	2	3	2	2	-	2
MGL Team Expenses	Tournament					0	
Ladies Section Expenses	Tournament	2	-	-	1	-	1
Ladies Tournament Expenses	Tournament	5	2	2	4	-	4
Sub Total		117	148	27	30	20	53

EVENTS		
Annual Day	Events	28
Ballot Committee Meeting	Events	1
Events Expenses	Events	12
Christmas Party Expenses	Events	2
New Year Expenses	Events	18
Caddies Welfare Exp.	Caddies	10
Diwali Festival Expenses	Events	2
Ganpati Festival Expenses	Events	2
Swimming Training Expenses	Health & Wellness	2
Sub Total		77
ELECTRICITY & FUEL		
Electricity Charges	Admin	163
Fuel & Oil Expenses	Admin	4
Sub Total		167
EMPLOYEE REMUNERATION		
Group Gratuity Expenses	HR & Legal	16
Salary, Wages & Other Allowances	HR & Legal	438
Bonus & Ex-Gratia	HR & Legal	58
EPF EMPLOYERS CONTRIBUTION	HR & Legal	37
ESIC EMPLOYER CONTRIBUTION	HR & Legal	3
Leave Encashment	HR & Legal	3
Leave Travel Allowance	HR & Legal	17
Medical Allowance	HR & Legal	5
Maharashtra Labour Welfare Fund	HR & Legal	0
Staff Welfare Expense	HR & Legal	17
Employee Wage Revision	HR & Legal	
Sub Total		593

28	-	20	-	30
1	-	1	-	1
10	0	12	1	12
2	0	2	-	2
17	-	10	-	10
14	55	40	29	30
2	2	2	0	2
2	1	1	1	1
1	-	1	-	1
77	57	89	31	89
157	71	130	72	150
1	1	2	0	2
158	71	132	72	152
11	9	13		13
439	388	448	262	402
54	98	39	25	55
36	32	39	20	33
2	1	2	0	0
5	16	3	2	2
17	21	12	11	16
2	6	2	1	3
-	0	0	0	0
12	14	14	14	16
-		41	-	-
577	585	613	335	540

ADMINISTRATIVE EXPENSES		
Club Expenses	Admin	
Auditors Remuneration *	Admin	
Internal Audit Fees *	Admin	
Bank Charges	Admin	
Books & Periodicals Expenses	Admin	
Business Meeting Expenses	Admin	
Conveyance Expenses	Admin	
Legal & Professional Charges	Admin	
Postage and Telephone	Admin	
Printing & Stationery	Admin	
Consultants	HR & Legal	
Retainership Charges	HR & Legal	
Security Charges	Security	
License Fee	Admin	
Software & Web Site Expenses	Admin	
Water & Sewage Expenses	Admin	
Medical Expenses	Admin	
Other Expenses	Admin	
Sub Total		
REPAIRS & MAINTENANCE		
R&M - Plant & Machinery	Admin	
R&M - Bldgs & Structures	Admin	
R&M - Motor Vehicles	Admin	
R&M - Office Equipments	Admin	
R&M - Kitchen Equipments	Admin	
R&M - Electrical Fittings	Admin	
R&M - Furniture & Fixtures	Admin	
R&M - Others	Admin	
Sub Total	Admin	
OTHERS		
Insurance	HR & Legal	
Rent, Rates & Taxes	HR & Legal	
Office Expenses & Advertisement	Admin	
Contingency	Admin	
Sub Total		
Total Expenses		

7	6	9	8	4	8
4	3	3	3	2	3
-	-	4	5	3	5
6	7	3	6	2	6
1	1	0	1	0	1
0	-	-	1	-	1
1	2	1	2	1	2
9	22	10	15	4	15
7	7	3	6	4	6
12	9	5	9	4	9
63	66	94	94	100	139
3	5	4	4	4	4
98	92	80	95	70	95
26	21	23	23	9	23
3	5	2	6	2	6
2	2	4	2	2	3
1	2	2	2	1	2
8	36	21	5	7	5
251	286	268	287	219	333
16	10	7		8	
41	27	23		30	
1	0	1		8	
5	5	4		2	
2	1	0	120	0	120
3	19	3		3	
2	0	-		1	
69	97	77		21	
139	160	114	120	73	120
5	10	8	7	6	10
65	65	66	65	62	66
2	8	3	5	3	5
			50		50
73	83	77	128	71	131
2,638	2,449	1,458	1,853	1,083	2,106

THE BOMBAY PRESIDENCY GOLF CLUB LIMITED

Annexure 6 : Requirement of Sand for Course maintenance

Sand required for top dressing of greens after core aeration			Fairway Top Dressing Sand requirement			Sand For Top Dressing of Tees		
total area of greens	12516	m ²		75	Acres	Area of Par 3 tees	2599.8	m ²
volume of root zone removed per square meter by aerating @ depth of 4" using 13mm tines	0.0041	m ³	Area of fairways and roughs	303525	m ²	monthly top dressing sand required (thickness @ 2 mm)	5.1996	m ³
Total Volume of root zone removed	51	m ³	Sand required for top dressing of fairways and rough (depth of 1 mm)	303.525	m ³	Area of rest tees	6280.9	m ²
Sand required for filling up the root zone	51	m ³	Weight of sand required for single Top Dressing	486	MT	volume of sand required for top dressing for thickness of 1 mm	6	m ³
Add 10% to value due to transportation loss and compaction etc	56	m ³	No. of top dressings required annually	3		Total sand required	11	m ³
Aeration operations to be done this year	2		Total sand required annually	1,457	MT	No. of top dressings annually	8	
Sand required for 3 aerations	113	m ³	Rate of coarse sand per MT	₹ 2,275		Annual sand required	92	m ³
Weight of sand required	181	MT	Cost of 3 Top dressings of the fairways (B)	₹ 33,14,493		Weight of sand required	147	MT
Sand required for dusting the greens @ thickness of 2 mm						Rate of per MT sand	₹ 2,275	
Volume of sand required to dust the greens (for 0.7mm)	9	m ³				Cost of Top dressing Tees ('C)	₹ 3,34,312	
Number of dusting operations annually	16		TOTAL Sand required for Course maintenance (A+B+C)	₹ 45,69,993		Total Qty of sand required for Course maintenance	2009	MT
Volume of sand required to dust the greens annually	140	m ³						
Weight of sand required for Green dusting	224	MT						
Total sand required for Greens	405	MT						
Rate of sand per MT	₹ 2,275							
Cost of Sand for Greens (A)	₹ 9,21,188							

THE BOMBAY PRESIDENCY GOLF CLUB LIMITED

Annexure - 7 : Sand - Upgradation Cost

COST WORKOUT FOR SAND REQUIREMENT FOR DEVELOPMENT OF 1B of PHASE 1

HOLE No.	Area	UNIT
11	7466.646	SQM
12	4776.72	SQM
13	4150.71	SQM
14	7687.133	SQM
15	9387.97	SQM
9	3321.52	SQM
17	3384.18	SQM
Nursery @ 12	927.71	SQM
Nursery @ 15	877.01	SQM
TOTAL	41979.599	SQM

SAND REQUIRED

PARTICULARS	QTY	UNIT
Sand @ 6"	6397.69	CUM
10% addition due to wastage and compaction	7037.46	CUM
Metric Tonne sand	10556.19	MT

APPROX COST OF MATERIAL

PARTICULARS	RATE PER UNIT	AMOUNT	
Sand @2275 per MT	₹ 2,275	₹ 2,40,15,332.2	
SUBTOTAL 1		₹ 2,40,15,332.2	
Sand in stock		1786	MT
Sand Required		8770.19	MT
COST OF SAND REQUIRED FOR DEVELOPMENT OF 1B of PHASE 1	₹ 2,275	₹ 1,99,52,182	
		₹ 199.52	

The above cost is for sand required for development of balance area of Phase 1 (1B of Phase 1)

THE BOMBAY PRESIDENCY GOLF CLUB LTD

BUDGET WORKING - FY 22-23

INDEX OF ATTACHMENTS

Sr. No	Particulars	Ref	Page Nos		
1	Notes on Compilation of Budget Data for FY 22-23		2		
2	Capex Budget Summary		3		
3	Revenue Budget Summary		4		
4	Details - Income		5-6		
5	Details - Expenses		7-9		
6	Balance Sheet Summary		10		
7	Details - Balance Sheet		11-13		
8	CashFlow Summary		14-15		
	Supporting Annexures				
9	Course Maintenance Machines	Anx-1	16-17		
10	New Golf Carts	Anx-2	18		
11	New Machine Workshop Shed	Anx-3	19		
12	Development Cost - Phase 1-B	Anx-4	20		
13	Irrigation System - Upgradation	Anx-5	21		
14	Details of Sand Cost - Maintenance	Anx-6	22		
15	Details of Sand Cost - Upgradation	Anx-7	23		

THE BOMBAY PRESIDENCY GOLF CLUB LIMITED	
REVENUE BUDGET FY 2022-23	

Notes on Compilation of Data for Budget FY 2022-23

- 1 YE Mar 19, YE Mar 20 and YE Mar 21 are Audited Actual Values
- 2 PE - Period Ending Dec 21 are Actual & UnAudited Figures incurred for the Period ended 31-12-2021
- 3 Budgeted Mar 23 figures are worked out based on details / estimates given by the Respective Functional Managers and received and vetted by the respective HOD Managers / Convenors
- 4 Mar 23 Budget Figures marked as *** are also dependent on the Present and Ongoing Extra Ordinary Circumstances under which the details are compiled but estimation is difficult and uncertain
- 5 Playing Conditions for YE Mar 22 was impacted by 54 days of Total Lockdown (excl Three Months of Monsoon). Resumption of activities was done in a phased and gradual manner in accordance with the various instructions received from Govt Authorities from time to time. Related Variable Revenues could be expected to be impacted in a similar manner this year also due to unforeseen evolving situations
- 6 Contract entered into with American Express for Three Years starting FY 2021-22 at a total consideration of Rs. 1.40 crores to permit / allow their Card Holders to come and play golf. This Revenue has been Accounted on Pro-rata basis for three years from FY 2021-22 under Green Fees Income
- 7 The Current Wage Agreement signed by BPGC with Mazdoor Congress was renewed for the period 2021-2024 w.e.f 1.4.21
- 8 In case of Revenue Budgets, Annexures are given for Major Items
- 9 This year, the Management has curtailed expenditure by taking Prudent & Timely actions resulting in a surplus for the year
- 10 During the Current Year Ending 31-03-2022 till date, a sum of Rs. 4.31 crores has been received on account of Entrance Fees for Permanent Members which are accounted directly in General Reserves and not reflecting in the Income & Expenditure

THE BOMBAY PRESIDENCY GOLF CLUB LTD					
CAPITAL BUDGET FY 2022-23					
All figs in Lakhs					
Sr No.	Department	Description	Annexure	Amount	Total Amount
1	Golf	Machines for Course Maintenance		220	
2		Replacement of Golf Carts (Ten Nos)		42	
3		Workshop & Machine Shed		161	
4		Phase I-B Development Cost (Balance Area of Phase I)		164	
5		Upgradation of Irrigation System (Phase I - Hole 11 to 15)		50	637
Total					637

THE BOMBAY PRESIDENCY GOLF CLUB LIMITED						
REVENUE BUDGET SUMMARY FY 2022-23						
Amt : Rs. In Lakhs						
INCOME	Actuals Audited	Actuals Audited	Actuals Audited	Revenue Budget	Actuals UnAudited	Revenue Budget
	YE Mar 19	YE Mar 20	YE Mar 21	YE Mar 22	PE Dec 21	YE Mar 23
Subscription, Green Fees, Entrance fees Short term & Corporate	811	1,009	890	912	729	911
Tournament, Junior Coaching,Sponsorship,Hoarding	161	116	9	13	31	24
Events - Annual Day,New Year & Christmas, Sponsorship	37	33	5	5	0	10
Permit Room Sale, Rental receipts from Rooms, Banquet,	460	398	120	150	107	221
Income from Catering	38	47	8	20	5	36
Income from Mutual Funds Gain	338	266	500	947	991	208
Interest Income	46	93	179	136	137	160
Other Income -(Rent from Proshop, Driving Range, Interest on Outstanding, Branding, Stall Activities & Scrap Sale)	68	58	42	64	22	31
Total Income	1,959	2,020	1,754	2,248	2,022	1,601
EXPENDITURE						
Course Maintenance Expenses	947	692	165	321	154	521
Cost of Amenities- Permit Room, Rooms, Laundry Expenses	275	267	94	133	108	167
Tournament, Junior Coaching, Interclub Expenses	117	148	27	30	20	53
Annual Day, New Year & Christmas, Caddies Welfare	77	77	57	89	31	89
Electricity & Gas Charges	167	158	71	132	72	152
Employees Remuneration & Benefits including Consultant	593	577	585	613	335	540
Admin Expenses- Security,Legal & Professionals Fees,etc	251	286	268	287	219	333
Repairs & Maintenance Expenses	139	160	114	120	73	120
Other Expenses- Lease Rent, Property Tax,etc	73	83	77	128	71	131
Total Expenses	2,638	2,449	1,458	1,853	1,083	2,106
Surplus / (Deficit) before Depreciation & Prior Period Items	(679)	(428)	296	395	939	(505)
Prior Period Expenses	21	1	-		0	
Depreciation	161	155	164		107	
Net Surplus / (Deficit) for the year	(861)	(584)	132		831	

THE BOMBAY PRESIDENCY GOLF CLUB LTD

DETAILS OF BUDGETED REVENUE INCOME FY 2022-23

Amount Rupees in Lakh

Particulars	Committee	Actuals Audited YE Mar 19	Actuals Audited YE Mar 20	Actuals Audited YE Mar 21	Revenue Budget YE Mar 22	Actuals UnAudited PE Dec 21	Revenue Budget YE Mar 23
RECEIPTS FROM MEMBERS							
Subscription	Greens	325	504	493	476	474	489
Green Fees (From Guest)	Greens	132	106	61	96	56	90
Entrance Fees	Greens	334	374	328	330	191	312
Guest Charges	Greens	20	20	3	6	4	18
Administrative Charges From Members	Greens	1	1	0	1	1	1
Re-Instatement fees	Greens	0	4	5	3	4	-
Sub Total		811	1,009	890	912	729	911
TOURNAMENT, COMPETITION & COACHING RECEIPTS							
Tournament Income	Tournament	128	86	-	-	19	-
Senior Golf Tournament	Senior Golf	1	3	0	1	-	1
Men's Tournament Income	Tournament	6	1	3	4	1	3
Ladies Tournament Income	Tournament	6	8	0	-	5	5
Juniors Coaching Income	Junior Golf	21	18	6	8	7	16
Sub Total		161	116	9	13	31	24
ACTIVITIES AND EVENTS INCOME							
Annual Day Income	Events	8	10	-	-	-	5
Christmas Party	Events	0	0	-	-	-	-
New Year Income	Events	15	13	-	-	-	5
Other Events	Events	2	0	-	-	-	-
Golf Practice Income	Greens	12	10	5	5	0	-
Sub Total		37	33	5	5	0	10
						Page 5	

THE BOMBAY PRESIDENCY GOLF CLUB LTD

DETAILS OF BUDGETED REVENUE INCOME FY 2022-23

Amount Rupees in Lakh

Particulars	Committee	Actuals Audited YE Mar 19	Actuals Audited YE Mar 20	Actuals Audited YE Mar 21	Revenue Budget YE Mar 22	Actuals UnAudited PE Dec 21	Revenue Budget YE Mar 23
AMENITIES INCOME		-					
Permit Room Sales	Bar	264	257	71	100	71	150
Rental Receipts - Hire Charges from Members	Hosp&Hygiene	130	104	26	32	22	50
Locker & Rack Rent	Greens	13	12	11	8	7	10
Health Club & Gymnasium Receipts	Health & Welln	5	6	-	-	-	-
Other Sales / Income	Admin	0	4	2	-	1	1
Hoarding & Display Income (Adoption of Hole)	Greens	46	14	11	10	6	10
Swimming Pool Receipts	Health & Welln	2	1	-	-	-	-
Sub Total		460	398	120	150	107	221
OTHER INCOMES		-					
Interest Income	Admin	46	93	179	136	137	160
(A)		46	93	179	136	137	160
Gain on Mutual fund	Admin	338	266	500	947	991	208
(B)		338	266	500	947	991	208
Establishment Income - Catering	Catering	38	47	8	20	5	36
(C)		38	47	8	20	5	36
Establishment Income - Proshop	Greens	8	9	6	7	3	8
Establishment Income - Evosports	Greens	7	6	2	6	4	7
Other Income -(Interest on Outstanding,etc.,)	Greens	51	43	34	50	14	15
Sale of Scrap	Greens	2	1	0	1	1	1
(D)		68	58	42	64	22	31
Sub Total (A +B+C+D)		489	464	729	1,167	1,154	435
Total of Income		1,959	2,020	1,754	2,248	2,022	1,601

THE BOMBAY PRESIDENCY GOLF CLUB LTD

DETAILS OF REVENUE EXPENDITURE FY 22-23

Amount Rupees in Lakh

Particulars	Committee	Actuals Audited YE Mar 19	Actuals Audited YE Mar 20	Actuals Audited YE Mar 21	Revenue Budget YE Mar 22	Actuals UnAudited PE Dec 21	Revenue Budget YE Mar 23
Course Maintenance Expenses							
CM - Fertilizers	Greens	30	12	18	24	28	24
CM - Fuel Expenses	Greens	22	20	21	36	19	44
CM - Labour Expenses	Greens	29	33	31	32	30	34
CM - Other Expenses	Greens	118	53	4	10	5	10
CM - Pesticides	Greens	10	3	12	29	2	29
CM - Repairs & Maintenance Expenses	Greens	110	108	61	123	73	114
CM - Sand Expenses	Greens	310	356	55	46	39	46
CM- Changes in Inventories	Greens	160	22	(39)		(47)	
Course Upgradation	Greens	142	85	-	-	5	199
Landscaping including maintenance	Greens	16	-	-	20	-	21
Sub Total		947	692	165	321	154	521
Amenities							
Permit Room Expenses	Bar	185	184	50	60	57	90
Billiard Room Expenses	Hosp&Hygiene	-	-	-	3	2	1
Cable TV Charges	Hosp&Hygiene	3	3	1	2	4	3
House Keeping Charges	Hosp&Hygiene	67	63	39	57	43	67
Room Expenses	Hosp&Hygiene	8	5	4	5	1	3
Other Facilities	Hosp&Hygiene	-	-	0	0	0	-
Laundry Expenses	Hosp&Hygiene	8	8	1	4	2	5
Catering Expenses	Catering	3	4	-	2		-
Sub Total		275	267	94	133	108	167
Tournaments							
Tournament Expenses	Tournament	65	96	5	5	6	5
Inter Club Tournament Expenses	Tournament	5	8	7	7	-	7
Jrs Coaching Expenses	Junior Golf	38	39	11	12	14	34
Senior Golf Tournament Expenses	Senior Golf	2	3	2	2	-	2
MGL Team Expenses	Tournament					0	
Ladies Section Expenses	Tournament	2	-	-	1	-	1
Ladies Tournament Expenses	Tournament	5	2	2	4	-	4
Sub Total		117	148	27	30	20	53

THE BOMBAY PRESIDENCY GOLF CLUB LTD
DETAILS OF REVENUE EXPENDITURE FY 22-23

Amount Rupees in Lakh

Particulars	Committee	Actuals Audited YE Mar 19	Actuals Audited YE Mar 20	Actuals Audited YE Mar 21	Revenue Budget YE Mar 22	Actuals UnAudited PE Dec 21	Revenue Budget YE Mar 23
Events							
Annual Day	Events	28	28	-	20	-	30
Ballot Committee Meeting	Events	1	1	-	1	-	1
Events Expenses	Events	12	10	0	12	1	12
Christmas Party Expenses	Events	2	2	0	2	-	2
New Year Expenses	Events	18	17	-	10	-	10
Caddies Welfare Exp.	Caddies	10	14	55	40	29	30
Diwali Festival Expenses	Events	2	2	2	2	0	2
Ganpati Festival Expenses	Events	2	2	1	1	1	1
Swimming Training Expenses	Health & Wellne	2	1	-	1	-	1
Sub Total		77	77	57	89	31	89
Electricity & Fuel							
Electricity Charges	Admin	163	157	71	130	72	150
Fuel & Oil Expenses	Admin	4	1	1	2	0	2
Sub Total		167	158	71	132	72	152
Employee Remuneration							
Group Gratuity Expenses	HR & Legal	16	11	9	13		13
Salary, Wages & Other Allowances	HR & Legal	438	439	388	448	262	402
Bonus & Ex-Gratia	HR & Legal	58	54	98	39	25	55
EPF EMPLOYERS CONTRIBUTION	HR & Legal	37	36	32	39	20	33
ESIC EMPLOYER CONTRIBUTION	HR & Legal	3	2	1	2	0	0
Leave Encashment	HR & Legal	3	5	16	3	2	2
Leave Travel Allowance	HR & Legal	17	17	21	12	11	16
Medical Allowance	HR & Legal	5	2	6	2	1	3
Maharashtra Labour Welfare Fund	HR & Legal	0	-	0	0	0	0
Staff Welfare Expense	HR & Legal	17	12	14	14	14	16
Employee Wage Revision	HR & Legal		-		41	-	-
Sub Total		593	577	585	613	335	540

THE BOMBAY PRESIDENCY GOLF CLUB LTD
DETAILS OF REVENUE EXPENDITURE FY 22-23

Amount Rupees in Lakh

Particulars	Committee	Actuals Audited YE Mar 19	Actuals Audited YE Mar 20	Actuals Audited YE Mar 21	Revenue Budget YE Mar 22	Actuals UnAudited PE Dec 21	Revenue Budget YE Mar 23
Administrative Expenses							
Club Expenses	Admin	7	6	9	8	4	8
Auditors Remuneration *	Admin	4	3	3	3	2	3
Internal Audit Fees *	Admin	-	-	4	5	3	5
Bank Charges	Admin	6	7	3	6	2	6
Books & Periodicals Expenses	Admin	1	1	0	1	0	1
Business Meeting Expenses	Admin	0	-	-	1	-	1
Conveyance Expenses	Admin	1	2	1	2	1	2
Legal & Professional Charges	Admin	9	22	10	15	4	15
Postage and Telephone	Admin	7	7	3	6	4	6
Printing & Stationery	Admin	12	9	5	9	4	9
Consultants	HR & Legal	63	66	94	94	100	139
Retainership Charges	HR & Legal	3	5	4	4	4	4
Security Charges	Security	98	92	80	95	70	95
License Fee	Admin	26	21	23	23	9	23
Software & Web Site Expenses	Admin	3	5	2	6	2	6
Water & Sewage Expenses	Admin	2	2	4	2	2	3
Medical Expenses	Admin	1	2	2	2	1	2
Other Expenses	Admin	8	36	21	5	7	5
Sub Total		251	286	268	287	219	333
Repairs & Maintenance Expenses							
R&M - Plant & Machinery	Admin	16	10	7	120	8	120
R&M - Bldgs & Structures	Admin	41	27	23		30	
R&M - Motor Vehicles	Admin	1	0	1		8	
R&M - Office Equipments	Admin	5	5	4		2	
R&M - Kitchen Equipments	Admin	2	1	0		0	
R&M - Electrical Fittings	Admin	3	19	3		3	
R&M - Furniture & Fixtures	Admin	2	0	-		1	
R&M - Others	Admin	69	97	77		21	
Repairs & Maintenance Expenses	Admin	139	160	114	120	73	120
Others							
Insurance	HR & Legal	5	10	8	7	6	10
Rent, Rates & Taxes	HR & Legal	65	65	66	65	62	66
Office Expenses & Advertisement	Admin	2	8	3	5	3	5
Contingency	Admin				50		50
Sub Total		73	83	77	128	71	131
Total Expenses		2,638	2,449	1,458	1,853	1,083	2,106

THE BOMBAY PRESIDENCY GOLF CLUB LTD					
SUMMARY OF ASSETS & LIABILITIES					
Amount Rupees in Lakh					
Particulars	Actual Audited	Actual Audited	Actual Audited	Actual UnAudited	
	YE Mar 19	YE Mar 20	YE Mar 21	PE Dec 21	
EQUITY & LIABILITIES :					
Member Funds :					
'- Reserves & Surplus	9,697	9,483	10,167	11,429	
Sub Total - A	9,697	9,483	10,167	11,429	-
Non-Current Liabilities :					
- Other Long Term Liabilities	948	839	919	1,044	
Sub Total - B	948	839	919	1,044	-
Current Liabilities :					
- Trade Payables	70	40	53	23	
- Other Current Liabilities	575	619	279	363	
- Short Term Provisions	122	59	103	48	
Sub Total - C	766	719	435	434	-
Grand Total (A + B + C)	11,410	11,041	11,521	12,907	-
ASSETS					
Non Current Assets :					
- Fixed Assets					
- i. Tangible Assets	1,484	1,496	1,340	1,250	
- ii. Intangible Assets	4	2	1	1	
- iii. Capital work in progress	54	60	60	60	
Sub Total - A	1,542	1,559	1,402	1,311	-
- Non Current Investments	6,658	5,786	2,186	6,978	
- Long Term Loans & Advances	34	21	17	17	
- Other Non-Current Assets	80	86	63	61	
Sub Total - B	6,772	5,894	2,266	7,056	-
Current Assets :					
- Current Investments	2,070	2,158	3,600	650	
- Inventories	145	126	164	196	
- Trade Receivables	108	80	41	126	
- Cash & Cash Equivalents	381	1,006	3,819	3,320	
- Short Term Loans & Advances	335	179	169	185	
- Other Current Assets	58	40	62	64	
Sub Total - C	3,097	3,589	7,854	4,540	-
Grand Total (A + B + C)	11,410	11,041	11,521	12,907	-

THE BOMBAY PRESIDENCY GOLF CLUB LTD					
DETAILS OF ASSETS & LIABILITIES					
Amount Rupees in Lakh					
Particulars	Actual Audited YE Mar 19	Actual Audited YE Mar 20	Actual Audited YE Mar 21	Actual UnAudited PE Dec 21	
EQUITY & LIABILITIES :					
Reserves & Surplus					
- Capital Reserves	46	46	46	46	
- General Reserves - Op Bal	13,880	14,716	15,087	15,638	
Add : Entrance Fees Recd This Yr	836	371	552	431	
Closing Bal c/fd	14,716	15,087	15,638	16,069	
- I&E Surplus / (Deficit) - Op Bal	(4,204)	(5,065)	(5,649)	(5,517)	
Surplus / (Deficit) - This Year	(861)	(584)	132	831	
Closing Bal c/fd	(5,065)	(5,649)	(5,517)	(4,686)	
Sub Total	9,697	9,483	10,167	11,429	-
Other Long Term Liabilities					
- Retention Money	4	7	12	12	
- Security Deposit from Members & Others	240	244	241	247	
- Advance Green Fees from American Express	64	31	-	101	
- Advance Membership Fees	585	506	644	655	
- Deposit for Membership	55	52	22	29	
Sub Total	948	839	919	1,044	-
Trade Payables					
- Trade Payables	70	40	53	23	
Sub Total	70	40	53	23	-
Other Current Liabilities					
- Income Received in Advances	255	236	257	361	
- Sundry Creditors for Services	92	76	20	1	
- Other Payables	227	308	2	1	
Sub Total	575	619	279	363	-
Short Term Provisions					
- Other Payable	105	81	54	73	
- Duties & Taxes Payable	16	(22)	49	(25)	
Sub Total	122	59	103	48	-

ASSETS					
Fixed Assets					
- i. Tangible Assets - Bal b/fd	1,571	1,484	1,496	1,340	
Additions during the year	89	202	8	17	
Deductions / Scrap / Sales (Net)	16	36	0	-	
Depreciation for the year	160	153	163	107	
Closing Balance c/fd	1,484	1,496	1,340	1,250	
- ii. Intangible Assets - Bal b/fd	2	4	2	1	
Additions during the year	3	-	-	-	
Depreciation for the year	1	2	1	0	
Closing Balance c/fd	4	2	1	1	
- iii. Capital work in progress	1	54	60	60	
Additions during the year	53	6			
Closing Balance c/fd	54	60	60	60	
Sub Total	1,542	1,559	1,402	1,311	-
Non Current Investments					
- Investment in Debentures or Bonds	250	407	717	407	
- Investment in Mutual Funds	6,408	5,379	1,469	6,571	
Sub Total	6,658	5,786	2,186	6,978	-
Long Term Loans & Advances					
- Security Deposits	17	17	17	17	
- Other Loans & Advances	17	4	-	-	
Sub Total	34	21	17	17	-
Other Non-Current Assets					
- Entrance Fees Receivable in Instalment	80	86	63	61	
Sub Total	80	86	63	61	-

Current Investments					
- Investment in Mutual Funds	2,070	2,158	3,600	650	
Sub Total	2,070	2,158	3,600	650	-
Inventories					
- Stock in Trade (Permit Room / Club Ties)	75	78	78	62	
- Course Material	70	48	87	134	
Sub Total	145	126	164	196	-
Trade Receivables					
- Trade Receivable - Less than 6 months	108	80	41	126	
Sub Total	108	80	41	126	-
Cash & Cash Equivalents					
- Bank FDR - maturing within 3 mths	210	131	828	3,220	
- Bank FDR - Maturing between 3 mths to 1 yr	15	34	402		
- Bank FDR - Maturing after 1 yr		812	2,441		
- Savings Bank balances	149	24	144	98	
- Cash in Hand	8	6	4	3	
Sub Total	381	1,006	3,819	3,320	-
Short Term Loans & Advances					
- Advance Tax & Other Taxes Receivables	335	179	167	183	
- Staff Advances			2	2	
Sub Total	335	179	169	185	-
Other Current Assets					
- Sundry Creditors having Debit balances	9	5	20	21	
- Prepaid Expenses	45	21	36	36	
- Medical Insurance - Employee Recovery	4	4	3	0	
- Pay Order Lying in Hand		10	-	-	
- Credit Card Dues/Cash Card			1	10	
- Party A/c			2	(3)	
- Others					
Sub Total	58	40	62	64	-

THE BOMBAY PRESIDENCY GOLF CLUB LIMITED

Cash Flow Statement for the year

		Actuals Audited	Actuals Audited	Actuals Audited	Actual UnAudited
		YE Mar 19	YE Mar 20	YE Mar 21	PE Dec 21
A	CASH FLOW FROM OPERATING ACTIVITIES				
	Excess of Income over expenditure / (Expenditure over Income) before taxation	(861)	(584)	132	831
	Adjustment for:				
	Depreciation/Amortisation/Diminution	161	155	164	107.34331
	Profit/loss on sale of fixed assets	(0)	26	0.04	
	Profit/loss on sale of investments	(338)	(266)	(500)	(991)
	Interest income	(46)	(93)	(179)	(137)
	Dividend Income	-	-		
	Operating profit before Working Capital changes	(1,084)	(762)	(383)	(189)
	Adjustments for changes in Working capital				
	Assets				
	Long term Loans and advances	9	12	0	0
	Other non-current assets	86	(6)	16	1
	Inventories	147	19	(38)	(31)
	Trade Receivables	18	28	28	(85)
	Short term Loans and advances	(15)	156	17	(17)
	Other current assets	56	17	(23)	(2)
		301	227	(0.37)	(133)
	Liabilities				
	Other long term liabilities	(14)	(108)	(144)	125
	Trade Payables	(41)	(29)	(57)	(30)
	Other current liabilities	(16)	44	(23)	84
	Short term Provisions	15	(62)	38	(55)
		(56)	(155)	(186)	124
		245	72	(186)	(10)
	Cash generated from operations	(839)	(691)	(569)	(199)
	Income taxes paid	-	-	-	-
	Net Cash from Operating activities	(839)	(691)	(569)	(199)

B	CASH FLOW FROM INVESTING ACTIVITIES					
	Fixed Assets:					
	Purchase		(144)	(208)	(7)	(16)
	Sale		16	10	0.43	
	Investments:		-	-		
	Purchase		(2,070)	(1,536)		(5,442)
	Sale		2,138	2,586	2658	4591
	Interest received		46	93	179	137
	Dividend received		-	-		
	Net Cash from/used in investing activities		(15)	945	2,830	(730)
C	CASH FLOW FROM FINANCING ACTIVITIES					
	Entrance Fees Received		836	371	552	431
	Interest paid		-	-		
	Net Cash from/used in financing activities		836	371	552	431
	NET INCREASE / DECREASE IN CASH FLOW		(18)	625	2,813	(499)
D	NET INCREASE / (DECREASE) IN CASH AND CASH EQUIVALENTS					
	Cash and Cash Equivalents (Opening balance)		400	381	1,006	3,819
	Cash and Cash Equivalents (Closing balance)		381	1,006	3,819	3,320
			18	(625)	(2,813)	499

THE BOMBAY PRESIDENCY GOLF CLUB LTD
Anx - 1 : COURSE MAINTENANCE MACHINES

USAGE OF MACHINE	EQUIPMENT	EQUIPMENT PICTURE	QTY REQUIRED	UNIT PRICE	AMOUNT	EQUIPMENT TO REPLACE	Equipment Picture	EQUIPMENT AGE	REASON FOR REPLACEMENT
For Fairway Mowing	Self propelled ride on Fairway mower 24-28 HP 3 Wheel Drive		1	₹ 63,81,833	₹ 63,81,833	FAIRWAY MOWER 305		11	Beyond Operational life. Availability of Spares & service is an issue.
FOR ROUGH MOWING (LARGE AREA)	WESSEX CRX 150 Tractor Towed Rough Mower		1	₹ 7,50,000	₹ 7,50,000	AR3		12	Beyond Operational life & Economical repairs Obsolete model spares availability issue. Service not available
FOR ROUGH MOWING (SMALL AREA)	TORO TITAN 152 Cm ride on Mower		1	₹ 10,61,760	₹ 10,61,760	AR3		11	Beyond Operational life & Economical repairs Obsolete model spares availability issue. Service not available
FOR GREEN/TEE MOWING	RIDE ON GREEN MOWER with De Thatching Reels		1	₹ 45,16,163	₹ 45,16,163	JACOBSEN GREENS KING IV PLUS		11	Beyond Operational life. Availability of Spares & service is an issue.
UTILITY VEHICLE MID PERFORMANCE	TORO WORKMAN MDX		1	₹ 12,63,370	₹ 12,63,370	CLUBCAR CARRY ALL		10	Beyond Operational life. Availability of Spares & service is an issue.

UTILITY VEHICLE HIGH PERFORMANCE	HEAVY DUTY UTILITY VEHICLE		1	₹ 31,86,745	₹ 31,86,745	TORO WORKMAN HDX		12	Beyond Operational Life and Beyond economic repair
BUNKER RAKING / MISCELLANEOUS WORKS	Motorised Bunker rake including tooth rake, spring rake and Drag mat carrier system		1	₹ 19,09,080	₹ 19,09,080	NA	NA	NA	Club should have one motorised rake as it will reduce man-days required for bunker maintenance and have a quicker turn around time. further it's a multifunctional machine so will help in towing drag mat, leveling of small projects and towing of de watering pumps, blowers etc
TRACTOR 55 HP MULTI PURPOSE	JOHN DEERE/ MAHINDRA /KUBOTA		1	₹ 9,50,000	₹ 9,50,000	MH03-AF.8307 TR 575NBP Bhumi putra		11	Beyond Operational Life and Beyond economic repair
WOOD CHIPPER MACHINE	INDIAN MADE HEAVY DUTY AND MOBILE UNIT		1	₹ 15,00,000	₹ 15,00,000	NA	NA	NA	Using wood chips as mulch will improve the aesthetics of the course and will help in economical disposal of arboriculture waste.
SAND SIEVING MACHINE FOR REMOVAL OF DEBRIS FROM COURSE MAINTENANCE SAND	LOCALLY FABRICATED	NA	1	₹ 5,00,000	₹ 5,00,000	NA	NA	NA	A machine is required to sieve sand in order to have no stones or pebbles in the sand for top dressing of greens or fairways to avoid damage to mowers and clubs of golfers.
TOTAL COST					₹ 2,20,18,951				

THE BOMBAY PRESIDENCY GOLF CLUB LIMITED
ANX - 2 : GOLF CART

Product Description	Qty	Unit Price	GST Rate	Amount	GST Amount	Total
New 2 Seater Golf Cart	10	4,15,000	5%	41,50,000	2,07,500	43,57,500

THE BOMBAY PRESIDENCY GOLF CLUB LIMITED

ANNEXURE 3

NEW MACHINE SHED & WORKSHOP - WORK DESCRIPTION

	Projected Details and Cost of Work	Total Area 1550 Sq Mtr	Total Cost
1.	Excavating Soil with JCB and carting away of the Mud upto 60 mtrs length X 25 mtrs width and backfilling		
2.	Providing and Laying 230 mm thick Rubble Soiling with compaction by plate vibrator / compactor and filling the joints with Metal 4, Metal 2 and Metal 1 as per the desired level		
3.	Providing and Laying 75mm thick PCC of grade M15 as per the drawings and including vibrating of concrete, curing etc		
4.	Footing for MS Column with foundation bolts of size 1000 * 1000 * 450 mm, with 8 mm steel and M20 grade concrete – 24 columns		
5.	Providing cutting, laying and binding of 8 m steel @ 200 mm C/C, Providing 150 mm thick concrete floor, pouring of M20 grade Ready mix concrete Floor with trimix, screed vibrating, compacting, levelling etc complete in all aspects with expansion joints at regular interval. Curing till 7 days		
6.	Providing and Fabricate MS Steel for Structure with heavy duty 6" 4" C Channel & MS Plates		
7.	Providing and Fixing GI coated sheet of 0.5 mm thick for roof of structure & on the sides of the complete shed up-to of JSW make – 2600 Sq mtrs		
8.	Providing and Fixing of Polycarbonate sheet for sunlight - 10pcs		
9.	Providing and Fixing Steel Ventilation fans with polycarbonate base for better air ventilation inside the shed – 06pcs		
10.	Providing fixing 20 mm thick asbestos cement sheet for ceiling of cabin & storage area Providing and fixing 2" * 1 " aluminium pipe and patti with 5 mm clear glass and 4 mm hardener to cover the cabin area with one door of size 7ft * 2.75ft Cabin size 15' * 10' – 2 cabins only		
11.	Providing and fixing 9" Thick Brick Wall on all side of the structure facing the sand area up-to 10ft height with both side plaster		
12.	Providing and fixing GI Chain Link of 2" Square and 12 guage above the wall		
13.	Providing and Applying paint on MS Structure and wall of the Workshop		
	Total cost of the project - New Machine Shed & Workshop		1,25,00,000
	ADD-ONS		
14.	Car Wash area		3,50,000
15.	Additional cabins, washroom, storage room, fuel storage room, steel fabricated storage racks, stairs		20,00,000
16.	Workshop bay with overhead crane for easy maintenance & repair of machine 20 feet x 15 feet		10,00,000
	Other Miscellaneous Items		2,50,000
	ADD-ONS Total Cost		36,00,000
	TOTAL BUDGETED COSTING		1,61,00,000

THE BOMBAY PRESIDENCY GOLF CLUB LIMITED

Annexure - 4 : Phase 1B : Development Cost of Balance Area of Phase 1

COST WORKOUT FOR PHASE 4 CONSTRUCTION			
HOLE No.		Area	UNIT
11		7466.646	SQM
12		4776.72	SQM
13		4150.71	SQM
14		7687.133	SQM
15		9387.97	SQM
9		3321.52	SQM
17		3384.18	SQM
Nursery @ 12		927.71	SQM
Nursery @ 15		877.01	SQM
TOTAL		41979.599	SQM
MATERIAL REQUIRED			
PARTICULARS		QTY	UNIT
Coir mat required		41979.60	SQM
Metal / Gravel 1 & 2 No. (15 - 20 mm)		4265.13	CUM
Metal in Brass		1505.59	Brass
APPROX COST OF MATERIAL			
PARTICULARS	RATE PER UNIT	AMOUNT	
COIR mat @ Rs 98 per SQM	₹ 98	₹ 41,14,000.7	
METAL/ GRAVEL @ 3500 per brass	₹ 3,500	₹ 52,69,564.7	
SUBTOTAL 1		₹ 93,83,565.4	
COST OF CONSTRUCTION			
CONTINENTAL @ 167.29 per SQM	₹ 167.29	₹ 70,22,767.1	
TOTAL COST OF CONSTRUCTION		₹ 1,64,06,332.5	

The above cost is for development of Balance area of Phase 1 (1B of Phase 1)

THE BOMBAY PRESIDENCY GOLF CLUB LIMITED

ANNEXURE 5

Proposal for Upgradation of Hole 11, 12, 13, 14, and 15 with IC based Irrigation System

Sr. No.	Product Description	Qty	Unit	Rate	Amount	Remarks
1	Irrigation Software up gradation package from Stratus LT to Stratus II Ver 8 - Rain Bird (USA)	1	Nos	8,87,750	8,87,750	One Time only. Applicable for 18 Holes and all future Expensions
2	ICl+ Interface Unit - Rain Bird (USA)	1	Nos	8,39,089	8,39,089	One Time only. Applicable for 18 Holes and all future Expensions
3	IC Module with Adopter - Rain Bird, USA	80	Nos	15,990	12,79,200	for Hole 11,12,13, 14 and 15
4	#14/2 Maxi Communication Wire - (1Roll = 2500') - Rain Bird (USA)	3	Rolls	1,35,000	4,05,000	
5	ICSD Surge Device - Rain Bird (USA)	12	No.	6,550	78,600	
6	5/8" Copper Road with Clamp	12	No.	3,500	42,000	
7	Wire Connector Splices Rain Bird (USA)	160	No.	150	24,000	
8	Trenching & Back Filling of soft soil	2000	Mtr.	75	1,50,000	
9	Installation, Testing and Commissioning	1	Unit	L/S	2,00,000	
	Total Amount (A)				39,05,639	
	GST @ 18%				7,03,015	
	Grand Total Amount				46,08,654	

THE BOMBAY PRESIDENCY GOLF CLUB LIMITED

Annexure 6 : Requirement of Sand for Course maintenance

Sand required for top dressing of greens after core aeration		
total area of greens	12516	m ²
volume of root zone removed per square meter by aerating @ depth of 4" using 13mm tines	0.0041	m ³
Total Volume of root zone removed	51	m ³
Sand required for filling up the root zone	51	m ³
Add 10% to value due to transportation loss and compaction etc	56	m ³
Aeration operations to be done this year	2	
sand required for 3 aerations	113	m ³
Weight of sand required	181	MT
Sand required for dusting the greens @ thickness of 2 mm		
Volume of sand required to dust the greens (for 0.7mm)	9	m ³
Number of dusting operations annually	16	
Volume of sand required to dust the greens annually	140	m ³
Weight of sand required for Green dusting	224	MT
Total sand required for Greens	405	MT
Rate of sand per MT	₹ 2,275	
Cost of Sand for Greens (A)	₹ 9,21,188	

Fairway Top Dressing Sand requirement		
	75	Acres
Area of fairways and roughs	303525	m ²
Sand required for top dressing of fairways and	303.525	m ³
Weight of sand required for single Top Dressing	486	MT
No. of top dressings required annually	3	
Total sand required annually	1,457	MT
Rate of coarse sand per MT	₹ 2,275	
Cost of 3 Top dressings of the fairways (B)	₹ 33,14,493	

TOTAL Sand required for Course maintenance (A+B+C)	₹ 45,69,993
---	--------------------

--	--

Sand For Top Dressing of Tees		
Area of Par 3 tees	2599.8	m ²
monthly top dressing sand required (thickness @ 2 mm)	5.1996	m ³
Area of rest tees	6280.9	m ²
for top dressing for thickness of 1 mm	6	m ³
Total sand required	11	m ³
No. of top dressings annually	8	
Annual sand required	92	m³
Weight of sand required	147	MT
Rate of per MT sand	₹ 2,275	
Cost of Top dressing Tees ('C')	₹ 3,34,312	
Total Qty of sand required for Course maintenance	2009	MT

THE BOMBAY PRESIDENCY GOLF CLUB LIMITED

Annexure - 7 : Sand - Upgradation Cost

COST WORKOUT FOR SAND REQUIREMENT FOR DEVELOPMENT OF 1B of PHASE 1			
HOLE No.		Area	UNIT
11		7466.646	SQM
12		4776.72	SQM
13		4150.71	SQM
14		7687.133	SQM
15		9387.97	SQM
9		3321.52	SQM
17		3384.18	SQM
Nursery @ 12		927.71	SQM
Nursery @ 15		877.01	SQM
TOTAL		41979.599	SQM
SAND REQUIRED			
PARTICULARS		QTY	UNIT
Sand @ 6"		6397.69	CUM
10% addition due to wastage and compaction		7037.46	CUM
Metric Tonne sand		10556.19	MT
APPROX COST OF MATERIAL			
PARTICULARS	RATE PER UNIT	AMOUNT	
Sand @2275 per MT	₹ 2,275	₹ 2,40,15,332.2	
SUBTOTAL 1		₹ 2,40,15,332.2	
Sand in stock		1786	MT
Sand Required		8770.19	MT
COST OF SAND REQUIRED FOR DEVELOPMENT OF 1B of PHASE 1	₹ 2,275	₹ 1,99,52,182	

The above cost is for sand required for development of balance area of Phase 1 (1B of Phase 1)